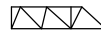


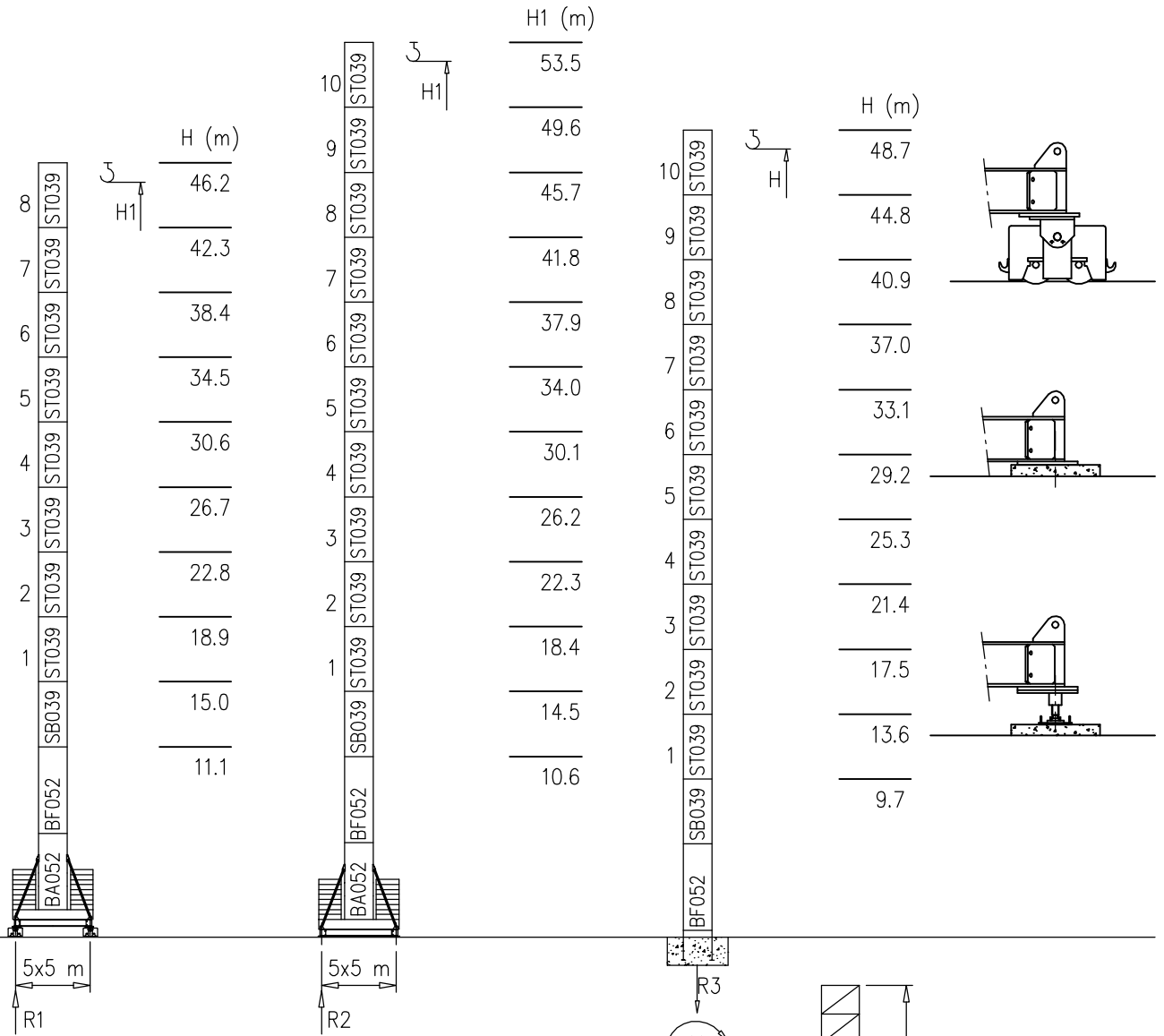
○ H=69.0 m
 ■ H=53.5 m

- S1700 – 1.70x1.70 m
- S2050 – 2.05x2.05 m

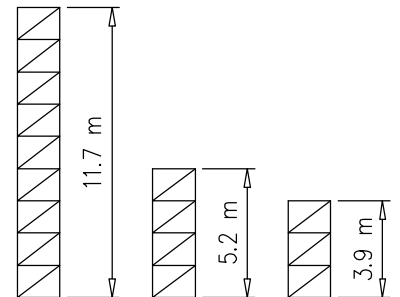
Torre/Reazioni – Masts/Reactions – Mat/Réactions – Maste/Eckdrücke – Mástil/Reacciones – Tramo/Reacções

S1700

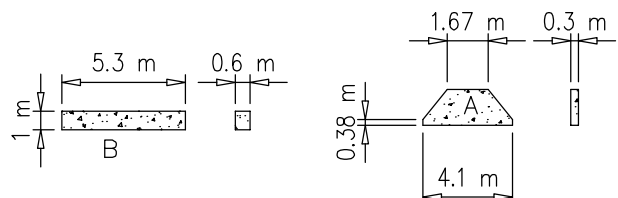
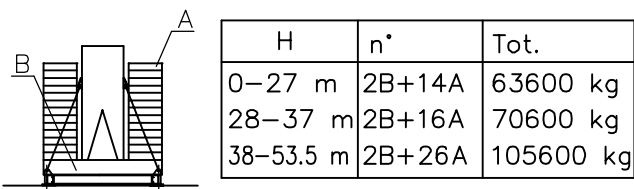
 20 m → 65 m



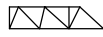
H=38–54 m		H=0–37 m	
R1	101 t	R1	89 t
R2	111 t	R2	88 t
R3	77 t	R3	69 t
M	305 tm	M	250 tm

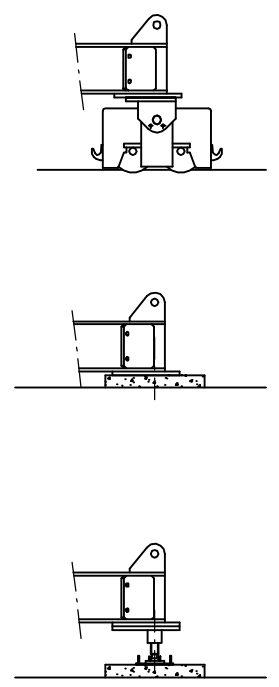
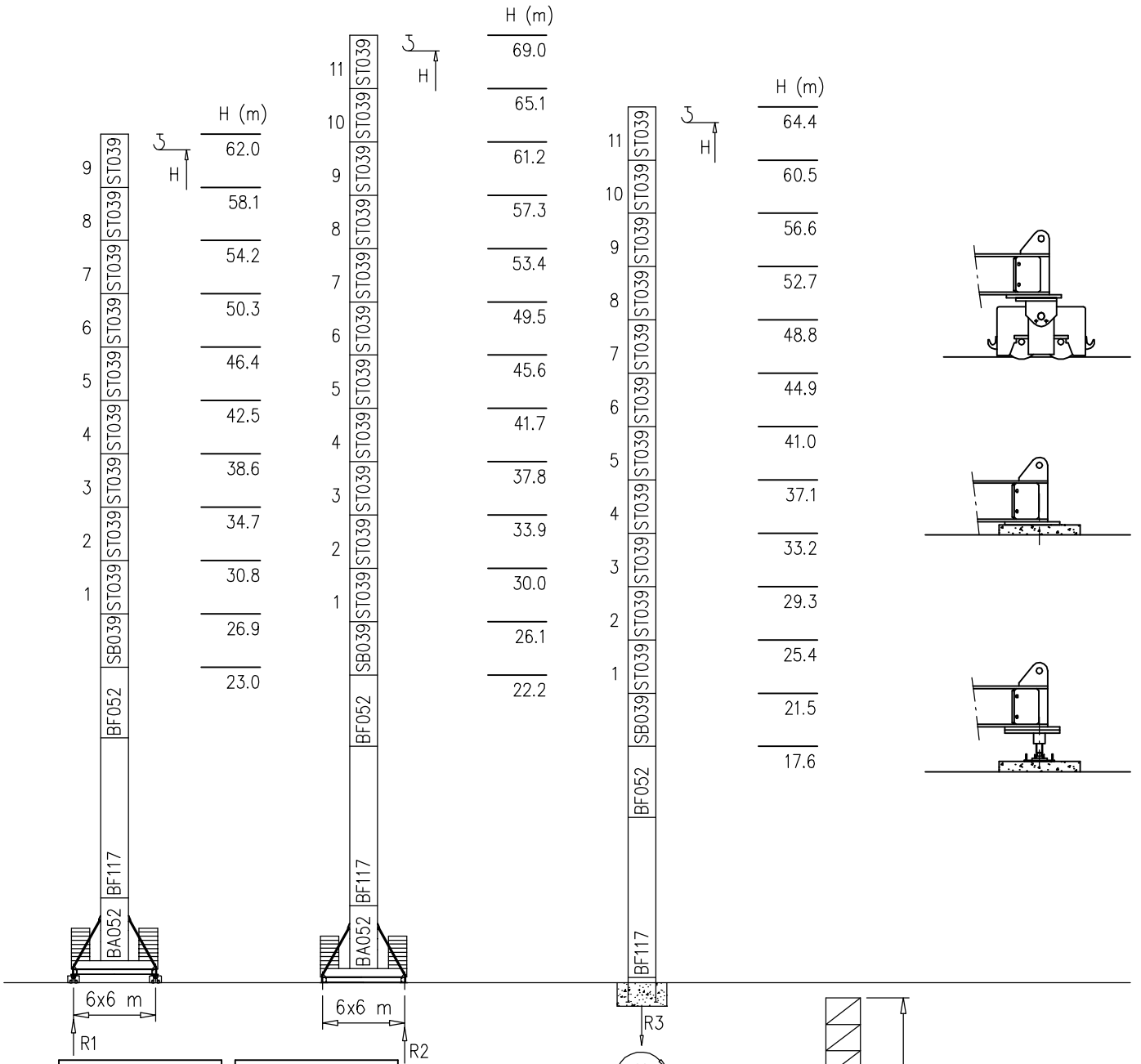


Peso zavorra – Ballast weight – Poids du lest – Ballastgewicht – Peso de lastre

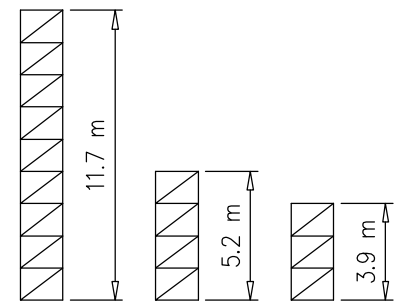


S2050

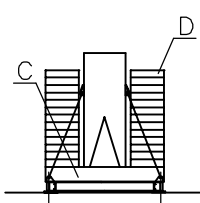
 20 m → 65 m



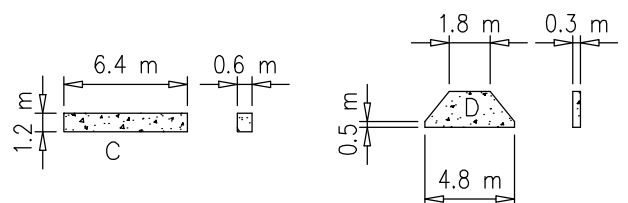
H=56–69 m		H=0–55 m	
R1	134 t	R1	101 t
R2	151.5 t	R2	105 t
R3	94 t	R3	82 t
M	626 tm	M	450 tm



Peso zavorra – Ballast weight – Poids du lest – Ballastgewicht – Peso de lastre



H	n°	Tot.
0–53 m	2C+16D	102320 kg
54–61 m	2C+18D	112460 kg
62–69 m	2C+22D	132740 kg

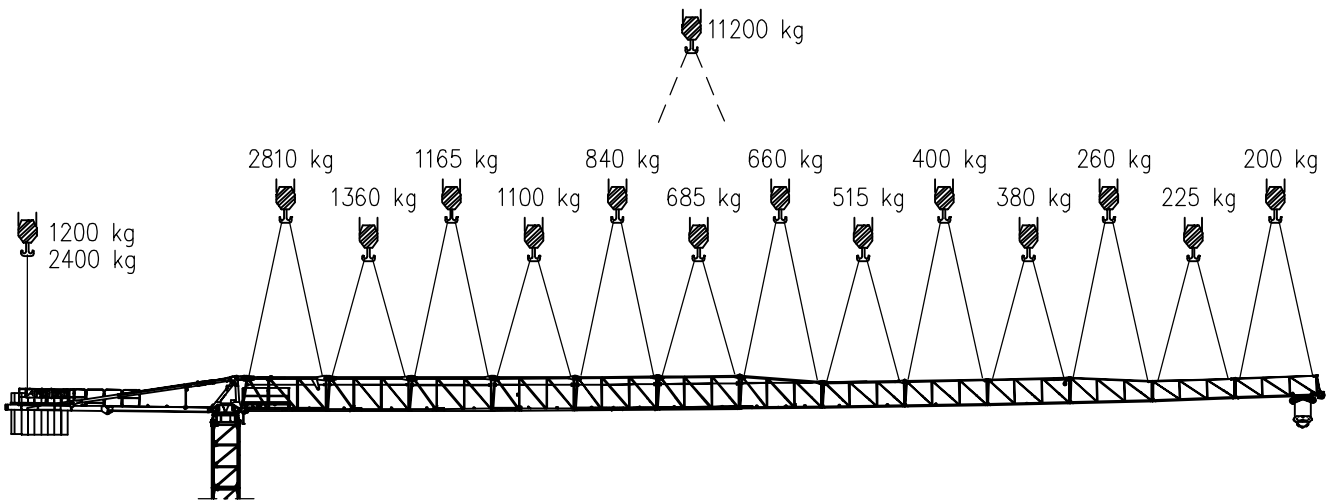
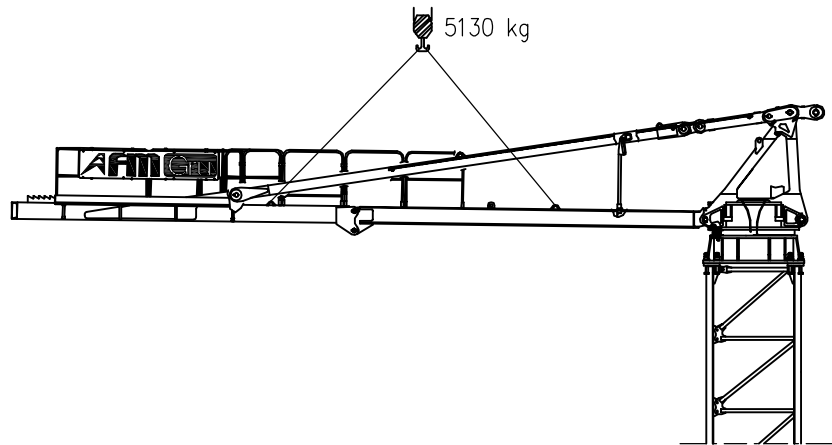
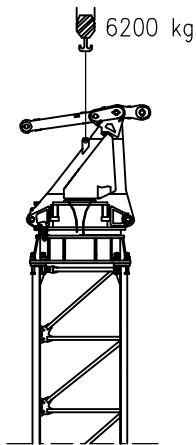
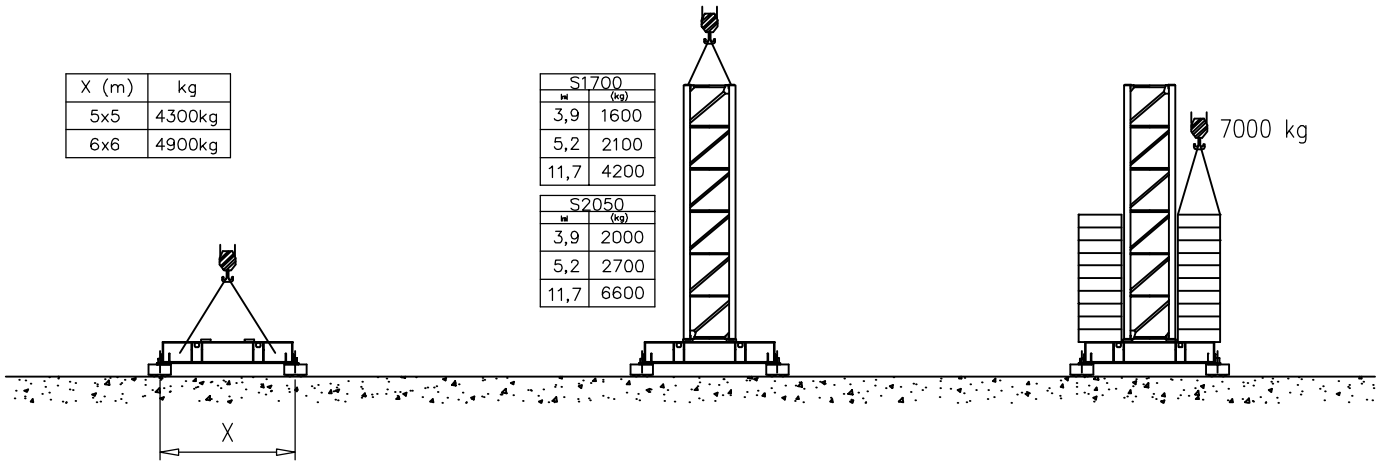


Montaggio – Montage – Erection – Montage – Montaje – Montagem

X (m)	kg
5x5	4300kg
6x6	4900kg

S1700	
H	(kg)
3,9	1600
5,2	2100
11,7	4200

S2050	
H	(kg)
3,9	2000
5,2	2700
11,7	6600



Sollevamento V25.60 Hoisting Levage Heben Elevaciòn Elevaçao			1a	7 m/min	3000 kg	18.5 kW	V25.60 37 kVA
			2a	18 m/min	3000 kg		
			3a	28 m/min	3000 kg		
			4a	42 m/min	2250 kg		
			5a	56 m/min	1500 kg		
			1a	3.5 m/min	6000 kg		
			2a	9 m/min	6000 kg		
			3a	14 m/min	6000 kg		
			4a	21 m/min	4500 kg		
			5a	28 m/min	3000 kg		
Sollevamento V33.90 Hoisting Levage Heben Elevaciòn Elevaçao			1a	3 m/min	3000 kg	22 kW	V33.90 47 kVA
			2a	18 m/min	3000 kg		
			3a	34 m/min	3000 kg		
			4a	54 m/min	1800 kg		
			5a	70 m/min	1300 kg		
			6a	90 m/min	500 kg		
			1a	1.5 m/min	6000 kg		
			2a	9 m/min	6000 kg		
			3a	17 m/min	6000 kg		
			4a	27 m/min	3600 kg		
			5a	35 m/min	2600 kg		
			6a	45 m/min	1000 kg		
Carrello Trolleying Distribution Katzfahren Distribuciòn Distribuiçao			1a	OP 5 m/min	6000 kg	3 kW	Potenza elettrica necessaria Puissance électrique nécessaire Necessary electric power Anschlusswert – Potencia
			2a	25 m/min	6000 kg		
			3a	50 m/min	3000 kg		
Rotazione Slewing Orientation Schwenken Orientaciòn Rotaçao			1a	0 → 0.2	giri/min tr/min rp/min	4.4 kW @ 1200rpm n° 2 x 2.2 kW	
			2a	0 → 0.6			
			3a	0 → 0.9			
Traslazione Travelling Translation Kranfahren Traslaciòn Traslaçao			1a	OP 0 → 5	3.7 kW		
			2a	0 → 20			

Rete elettrica – Réseau – Mains supply – Netzstrom – Red – Rede electrica	400V – 50 Hz
---	--------------

FMgru s.r.l. via Emilia 11-29010 Pontenure PC ITALY tel. 0523/510446 ric.aut. fax 0523/510365 www.fmgru.com e-mail: info@fmgru.com

FEM 1.001 2000/14/CE



Documento commerciale non contrattuale
Per tutte le informazioni tecniche riferirsi
alle corrispondenti istruzioni

Unverbindliches Vertriebsdokument.
Für technische Informationen, siehe die
entsprechenden Anweisungen.

This commercial document is not legally
binding. For any technical information, please
refer to the corresponding instructions.

Documento comercial no contractual
Para cualquier información técnica,
ver la noticia correspondiente.

Code: 15/CA37T45A0		
Ed.	Data	Rev Data
1	10.01.07	2 02.12.08