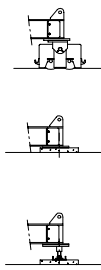
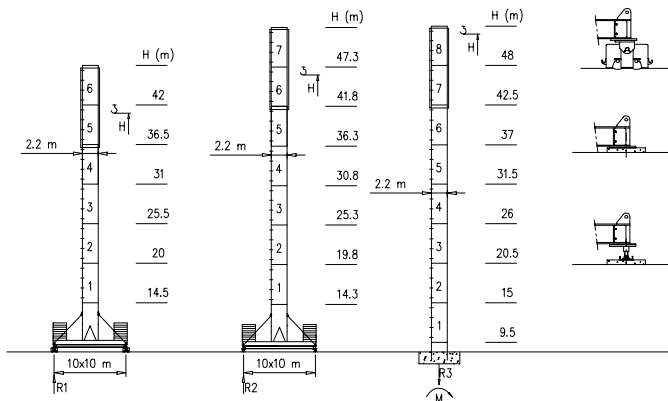


- S2200 – 2.20x2.20 m
- M2500 – 2.50x2.50 m

Torre/Reazioni - Masts/Reactions - Mat/Réactions - Maste/Eckdrücke - Mástli/Reacciones - Tramo/Reacções

S2200

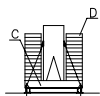
47.6 m → 70 m



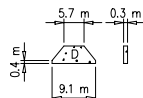
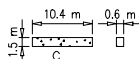
| | |
|----------|--------|
| H=0-48 m | |
| R1 | 120 t |
| R2 | 120 t |
| R3 | 150 t |
| M | 634 tm |



Peso zavorra - Ballast weight - Poids du lest - Ballastgewicht - Peso de lastre

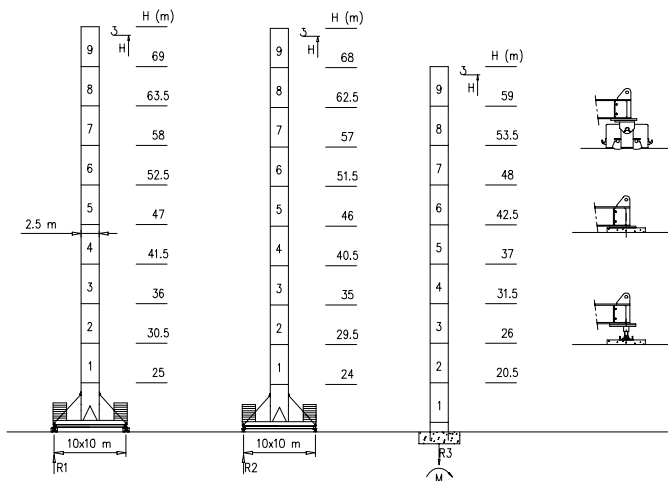


| H | n* | Tot. |
|--------|--------|-----------|
| 0-48 m | 2C+ 8D | 102320 kg |



M2500

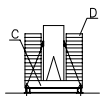
47.6 m → 70 m



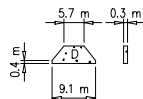
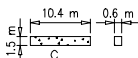
| H=0-48 m | H>48m |
|----------|------------|
| R1 120 t | Contact us |
| R2 120 t | |
| R3 150 t | |
| M 634 tm | |



Peso zavorra - Ballast weight - Poids du lest - Ballastgewicht - Peso de lastre

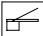
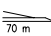

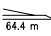

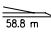

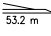
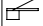
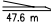


| H | n* | Tot. |
|--------|--------|-----------|
| 0-69 m | 2C+ 8D | 102320 kg |



Curve di carico - Courbes de charges - Load diagrams - LastKurven - Curvas de cargas

Pmax 20000/10000 kg

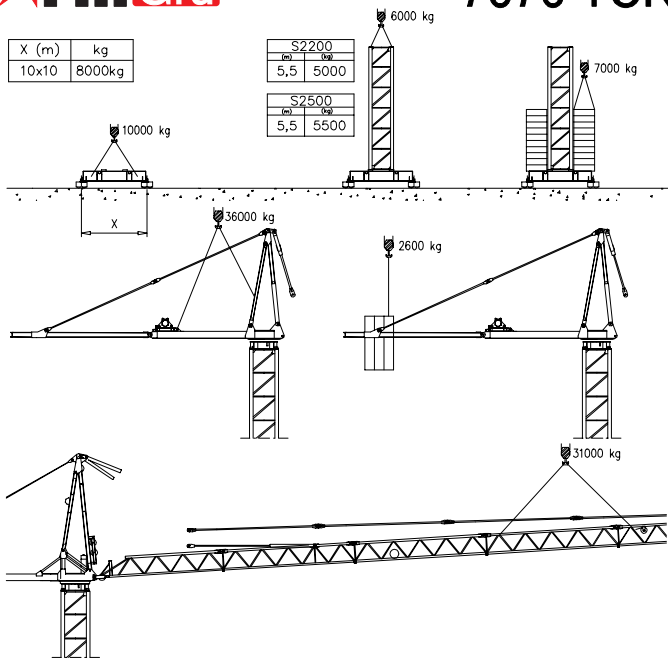
| | | | | | | | | | | | | | | | | | | | | | | | | | | |
|--|----------|---|--------|-------|-------|------|------|------|------|------|------|------|------|------|------|------|------|------|------|------|------|------|------|------|------|----|
|  | 32630 kg |  | 70 m | 3.5 | 30 | 32 | 34 | 36 | 38 | 40 | 42 | 44 | 46 | 48 | 50 | 52 | 54 | 56 | 58 | 60 | 62 | 64 | 66 | 68 | 70 | m |
| | | | | 20000 | 18600 | 7500 | 6000 | 5500 | 4680 | 3800 | 3000 | 2500 | 2000 | 1000 | 0800 | 0500 | 0000 | 0000 | 9600 | 8800 | 8400 | 8000 | 7800 | 7500 | 7000 | kg |
|  | 30120 kg |  | 64.4 m | 3.5 | 30 | 32 | 34 | 36 | 38 | 40 | 42 | 44 | 46 | 48 | 50 | 52 | 54 | 56 | 58 | 60 | 62 | 64.4 | m | | | |
| | | | | 20000 | 18600 | 7500 | 6000 | 5500 | 4680 | 3800 | 3000 | 2500 | 2000 | 1000 | 0800 | 0500 | 0000 | 9600 | 8800 | 8400 | 8000 | 7800 | 7500 | 7000 | kg | |
|  | 27610 kg |  | 58.8 m | 3.5 | 30 | 32 | 34 | 36 | 38 | 40 | 42 | 44 | 46 | 48 | 50 | 52 | 54 | 56 | 58.8 | m | | | | | | |
| | | | | 20000 | 18600 | 7500 | 6000 | 5500 | 4680 | 3800 | 3000 | 2500 | 2000 | 1000 | 0800 | 0500 | 0000 | 9500 | kg | | | | | | | |
|  | 27610 kg |  | 53.2 m | 3.5 | 30 | 32 | 34 | 36 | 38 | 40 | 42 | 44 | 46 | 48 | 50 | 52 | 53.2 | m | | | | | | | | |
| | | | | 20000 | 18600 | 7500 | 6000 | 5500 | 4680 | 3800 | 3000 | 2500 | 2000 | 1000 | 0800 | 0000 | kg | | | | | | | | | |
|  | 25100 kg |  | 47.6 m | 3.5 | 30 | 32 | 34 | 36 | 38 | 40 | 42 | 44 | 46 | 47.6 | m | | | | | | | | | | | |
| | | | | 20000 | 18600 | 7500 | 6000 | 5500 | 4680 | 3800 | 3000 | 2500 | 2000 | kg | | | | | | | | | | | | |



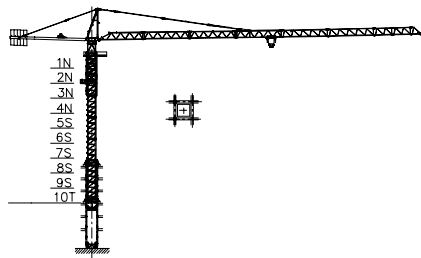
| | |
|-------|--------|
| X (m) | kg |
| 10x10 | 8000kg |

| | |
|-------|------|
| S2200 | |
| (m) | (kg) |
| 5,5 | 5000 |

| | |
|-------|------|
| S2500 | |
| (m) | (kg) |
| 5,5 | 5500 |



Gru in cavetto - Climbing crane - Télésopage sur dalles - Kletterkrane in Gebäude - Telescopage gruas trepadoras - Telescopagem sobre lajes



| Number of tower section | H (m.) |
|-------------------------|--------|
| 5S+2N+T | 33.40 |
| 5S+3N+T | 37.30 |
| 5S+4N+T | 41.20 |

N = Standard mast element
T = Telescopic element
S = Special mast element

Meccanismi – Mechanisms – Mécanismes – Antriebe – Mecanismos

| | | | | | | | |
|--|-------------|--|----|-----------|------------------------------|-----------------------------------|---|
| Sollevamento V75.60 Hoisting Elevación | ▲ ● ▼ | | 1a | 2 m/min | 10000 kg | 55 kW | V75.60 89 kVA |
| | | | 2a | 20 m/min | 10000 kg | | |
| | | | 3a | 30 m/min | 8500 kg | | |
| | | | 4a | 46 m/min | 5500 kg | | |
| | | | 5a | 60 m/min | 4500 kg | | |
| | | | 1a | 1 m/min | 20000 kg | | |
| | | | 2a | 10 m/min | 20000 kg | | |
| | | | 3a | 15 m/min | 17000 kg | | |
| | | | 4a | 23 m/min | 11000 kg | | |
| | | | 5a | 30 m/min | 9000 kg | | |
| Sollevamento V130.100 Hoisting Elevación | ▲ ● ▼ | | 1a | 4 m/min | 10000 kg | 95 kW | V130.100 136 kVA |
| | | | 2a | 44 m/min | 10000 kg | | |
| | | | 3a | 62 m/min | 8000 kg | | |
| | | | 4a | 78 m/min | 6000 kg | | |
| | | | 5a | 100 m/min | 4500 kg | | |
| | | | 1a | 2 m/min | 20000 kg | | |
| | | | 2a | 22 m/min | 20000 kg | | |
| | | | 3a | 31 m/min | 16000 kg | | |
| | | | 4a | 39 m/min | 12000 kg | | |
| | | | 5a | 50 m/min | 9000 kg | | |
| Carrello Trolleying Distribución | ◀ ▶ | | 1a | 5 m/min | 20000 kg | 7.5 kW | Potenza elettrica necessaria Puissance électrique nécessaire Necessary electric power Anschlusswert Potencia |
| Rotazione Slewing Orientación | | | 2a | 40 m/min | 20000 kg | | |
| | | | 3a | 80 m/min | 10000 kg | | |
| | | | 1a | 0 → 0.2 | giri/min tr/min rp/min | 8.8 kW @ 1200rpm n° 4 x 2.2 kW | |
| 2a | 0 → 0.6 | | | | | | |
| 3a | 0 → 0.9 | | | | | | |
| Traslazione Travelling Traslación | ◀ ▶ | | 1a | 0 → 5 | 15 kW | | |
| | | | 2a | 0 → 20 | | | |

Rete elettrica – Réseau – Mains supply – Netzstrom – Red – Rede electrica 400V – 50 Hz

FMgru s.r.l.
via Emilia 11-29010 Pontenure PC ITALY
tel. 0523/510446 ric.cst. fax 0523/510355
www.fmgru.com e-mail: info@fmgru.com

FEM 1.001
2000/14/CE



Documento commerciale non contrattuale
Für alle Informationen technische rufen Sie
alle correspondents Istruzioni!

Unverbindliches Vertriebsdokument.
Für technische Informationen, siehe die
entsprechenden Anweisungen.

This commercial document is not legally
binding. For any technical information, please
refer to the corresponding instructions.

Documento commerciale non contrattuale
Para cualquier información técnica,
ver la redicte correspondente.

Code: 15ICAS17M846
Ed. Data: [] Rev. Data: []
1. 05.05.03/0. 05.06.03