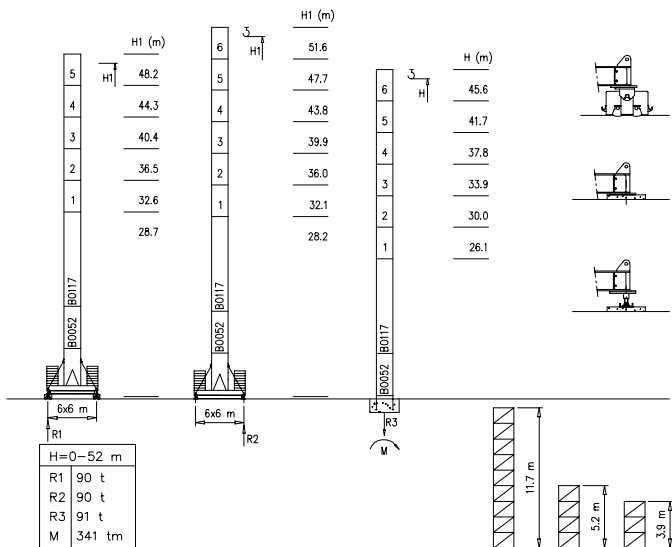


- M2500 - 2.50x2.50 m
- S2050 - 2.05x2.05 m

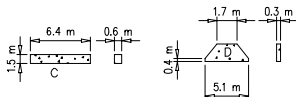
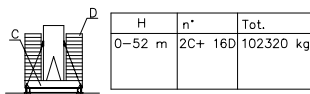
Torre/Reazioni - Masts/Reactions - Mat/Réactions - Maste/Eckdrücke - Mástil/Reacciones - Tramo/Reacções

S2050

68.8 m → 80 m



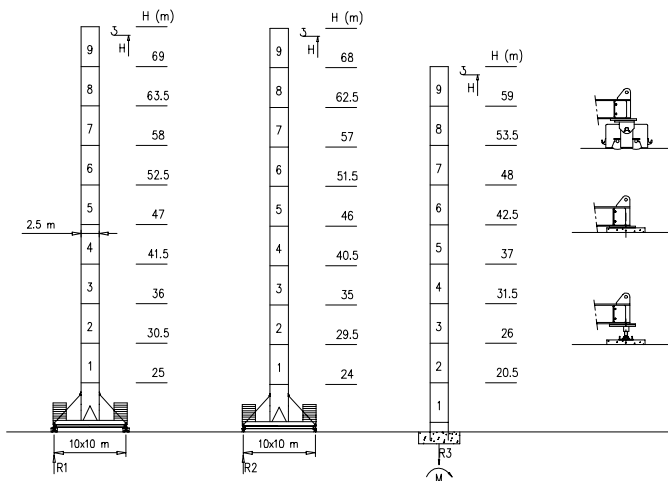
Peso zavorra - Ballast weight - Poids du lest - Ballastgewicht - Peso de lastre



Torre/Reazioni - Masts/Reactions - Mat/Réactions - Maste/Eckdrücke - Mástil/Reacciones - Tramo/Reacções

M2500

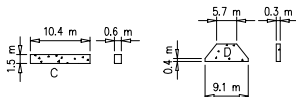
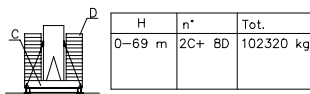
68.8 m → 80 m



H=0-48 m	H>48m
R1 120 t	Contact us
R2 120 t	
R3 150 t	
M 634 tm	

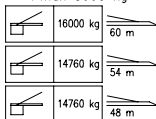


Peso zavorra - Ballast weight - Poids du lest - Ballastgewicht - Peso de lastre



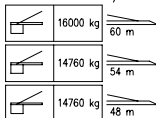
Curve di carico - Courbes de charges - Load diagrams - LastKurven - Curvas de cargas

Pmax 8000 kg



33	34	36	38	40	42	44	46	48	52	54	56	58	60	m
8000	7500	7100	6500	6000	5500	5400	4800	4500	4200	4000	3900	3700	3600	kg
35	36	38	40	42	44	46	48	52	54					m
8000	7600	7100	6700	6100	5800	5000	4800	4600	4400					kg
36	38	40	42	44	46	48							m	
8000	7600	7200	6500	6200	5650	5400							kg	

Pmax 16000/8000 kg

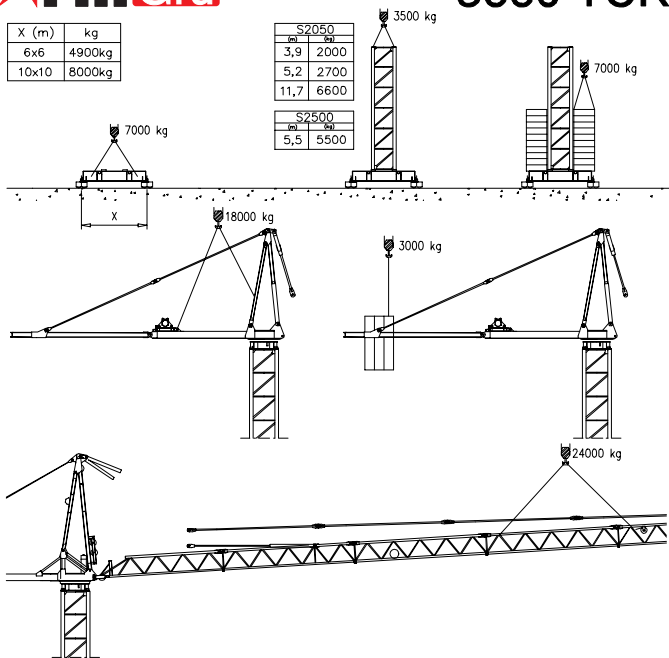


3.5	16	20	22	24	26	28	30	32	34	36	38	40	42	44	46	48	52	54	56	58	60	m	
16000	14150	12500	11500	10000	9500	9000	8100	7500	7100	6500	6000	5500	5400	4800	4500	4200	4000	3900	3700	3600			kg
3.5	16	20	22	24	26	28	30	32	34	36	38	40	42	44	46	48	52	54				m	
16000	15000	13500	12400	11400	10000	9700	9100	8100	7600	7100	6700	6100	5800	5000	4800	4600	4400					kg	
3.5	20	22	24	26	28	30	32	34	36	38	40	42	44	46	48						m		
16000	14500	13200	12100	11200	10000	9650	9000	8000	7600	7200	6500	6200	5650	5400						kg			

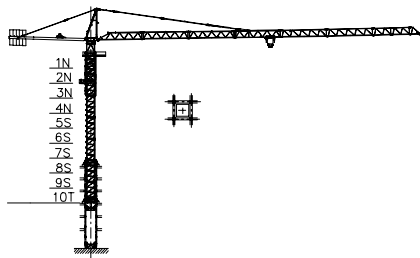
X (m)	kg
6x6	4900kg
10x10	8000kg

S2050	
(m)	(kg)
3,9	2000
5,2	2700
11,7	6600

S2500	
(m)	(kg)
5,5	5500



Gru in cavedito - Climbing crane - T elescopage sur dalles - Kletterkrane in Geb ude - Telescopage gruas trepadoras - Telescopagem sobre lajes



Number of tower section	H (m.)
5S+2N+T	33.40
5S+3N+T	37.30
5S+4N+T	41.20

N = Standard mast element
 T = Telescopic element
 S = Special mast element

Meccanismi – Mechanisms – Mécanismes – Antriebe – Mecanismos

Sollevamento V60.60 Hoisting Elevaci6n			1a	2 m/min	8000 kg	45 kW	V60.60 75 kVA
			2a	20 m/min	8000 kg		
			3a	31 m/min	7000 kg		
			4a	46 m/min	4500 kg		
			5a	60 m/min	3000 kg		
			1a	1 m/min	16000 kg		
			2a	10 m/min	16000 kg		
			3a	15 m/min	14000 kg		
			4a	23 m/min	9000 kg		
			5a	30 m/min	6000 kg		
Sollevamento V100.100 Hoisting Elevaci6n			1a	4 m/min	8000 kg	75 kW	V100.100 110 kVA
			2a	44 m/min	8000 kg		
			3a	68 m/min	5000 kg		
			4a	82 m/min	4000 kg		
			5a	100 m/min	3000 kg		
			1a	2 m/min	16000 kg		
			2a	22 m/min	16000 kg		
			3a	34 m/min	10000 kg		
			4a	41 m/min	8000 kg		
			5a	50 m/min	6000 kg		
Carrello Trolleying Distribuci6n			1a	5 m/min	16000 kg	5.5 kW	Potenza elettrica necessaria Puissance électrique nécessaire Necessary electric power Anschlusswert Potencia
			2a	40 m/min	16000 kg		
			3a	80 m/min	8000 kg		
Rotazione Slewing Orientaci6n			1a	0 → 0.2	giri/min tr/min	8.8 kW @ 1200rpm n° 4 x 2.2 kW	
			2a	0 → 0.6	rp/min		
			3a	0 → 0.9			
Traslazione Travelling Traslaci6n			1a	0 → 5		15 kW	
			2a	0 → 20			

Rete elettrica – Réseau – Mains supply – Netzstrom – Red – Rede electrica

400V – 50 Hz



FMgru s.r.l.

via Emilia 11-29010 Pontenure PC ITALY
tel. 0523/510446 ric.cst. fax 0523/510365
www.fmgru.com e-mail: info@fmgru.com

FEM 1.001

2000/14/CE



Documento commerciale non contrattuale
Par tutte le informazioni tecniche riferirsi
alle corrispondenti Istruzioni!

Unverbindliches Vertriebsdokument.
Für technische Informationen, siehe die
entsprechenden Anweisungen.

This commercial document is not legally
binding. For any technical information, please
refer to the corresponding instructions.

Documento commerciale non contrattuale
Para cualquier informaci6n t6cnica,
ver la n6tica correspondiente.

Code: 15ICAS7M72A0

Ed. Data: _____ Rev. Data: _____
Il: 06.06.03/06.06.03