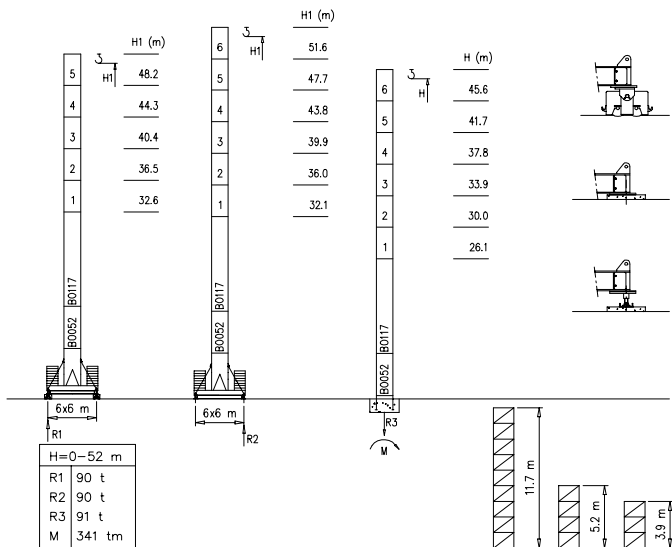
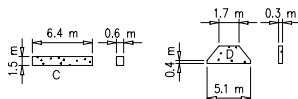
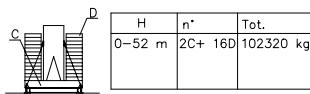


S2050

42 m  $\rightarrow$  70 m

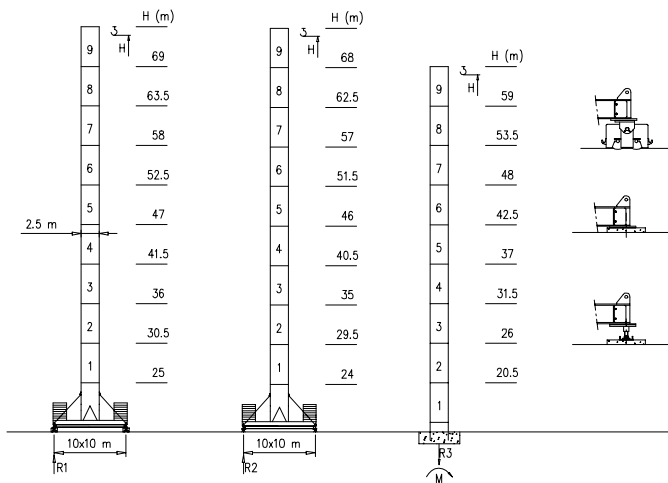


Peso zavorra - Ballast weight - Poids du lest - Ballastgewicht - Peso de lastre



M2500

42 m → 70 m

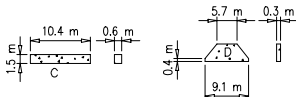


H=0-48 m	H>48m
R1 120 t	Contact us
R2 120 t	
R3 150 t	
M 634 tm	



Peso zavorra - Ballast weight - Poids du lest - Ballastgewicht - Peso de lastre

H	n*	Tot.
0-69 m	2C+ 8D	102320 kg



Curve di carico - Courbes de charges - Load diagrams - LastKurven - Curvas de cargas

Pmax 6000 kg

	25000 kg		70 m	3.5	35	36	38	40	42	44	46	48	50	52	54	56	58	60	62	66	70	m
			6000	6000	5800	5400	5100	4850	4500	4250	4000	3850	3700	3450	3300	3150	3000	2900	2700	2500	kg	
	22500 kg		64.4 m	3.5	35	36	38	40	42	44	46	48	50	52	54	56	58	60	62	64.4	m	
			6000	6000	5700	5400	5200	4800	4400	4250	4100	3700	3600	3500	3400	3200	3100	3000	2800	kg		
	20000 kg		58.8 m	3.5	35	36	38	40	42	44	46	48	50	52	54	56	58.8	m				
			6000	6000	5800	5400	5200	4850	4400	4250	4150	3750	3600	3500	3400	3300	kg					
	17500 kg		53.2 m	3.5	35	36	38	40	42	44	46	48	53.2	m								
			6000	6000	5800	5400	5200	4800	4400	4250	4150	3600	kg									
	15000 kg		47.6 m	3.5	36	38	40	42	44	46	47.6	m										
			6000	6000	5600	5200	5000	4600	4300	4200	kg											
	12500 kg		42 m	3.5	36	38	40	42	m													
			6000	6000	5600	5400	5000	kg														

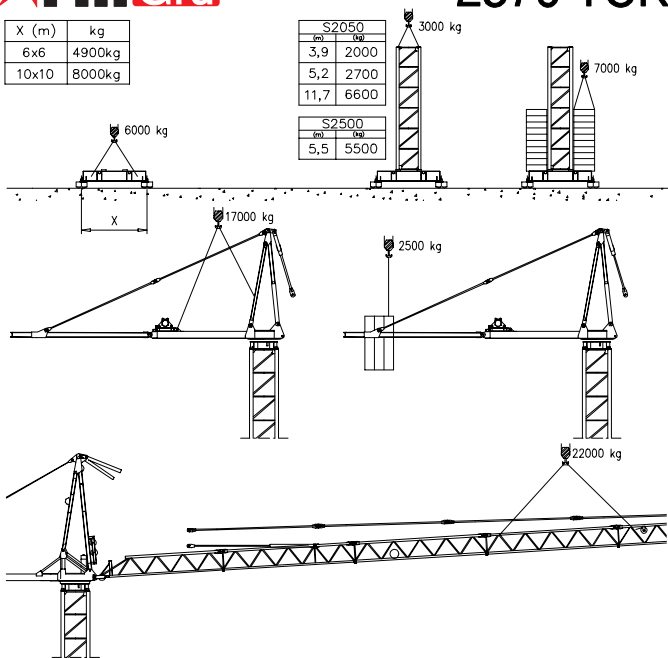
Pmax 12000/6000 kg

	25000 kg		70 m	3.5	20	24	28	32	34	36	38	40	42	44	46	48	50	52	54	56	58	60	62	66	70	m
			12000	9500	7800	6700	6280	5800	5400	5100	4850	4500	4250	4000	3850	3700	3450	3300	3150	3000	2900	2700	2500	kg		
	22500 kg		64.4 m	3.5	20	24	28	32	34	36	38	40	42	44	46	48	50	52	54	56	58	60	62	64.4	m	
			12000	9700	8100	6700	6450	5700	5400	5200	4800	4400	4250	4100	3700	3600	3500	3400	3200	3100	3000	2800	kg			
	20000 kg		58.8 m	3.5	20	24	28	32	34	36	38	40	42	44	46	48	50	52	54	56	58.8	m				
			12000	9800	8200	6900	6500	5800	5400	5200	4850	4400	4250	4150	3750	3600	3500	3400	3300	kg						
	17500 kg		53.2 m	3.5	20	24	28	32	34	36	38	40	42	44	46	48	53.2	m								
			12000	9800	8200	6900	6500	5800	5400	5200	4850	4400	4250	4150	3600	kg										
	15000 kg		47.6 m	3.5	22	24	28	32	34	36	38	40	42	44	46	47.6	m									
			12000	10500	8500	7000	6700	6000	5600	5200	5000	4600	4300	4200	kg											
	12500 kg		42 m	3.5	22	24	28	32	34	36	38	40	42	m												
			12000	10700	8700	7500	6900	6000	5600	5400	5000	kg														

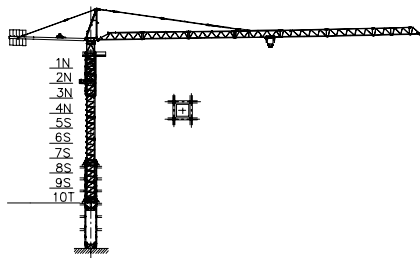
X (m)	kg
6x6	4900kg
10x10	8000kg

S2050	
(m)	(kg)
3,9	2000
5,2	2700
11,7	6600

S2500	
(m)	(kg)
5,5	5500



Gru in caviedo - Climbing crane - Télescopage sur dalles - Kletterkrane in Gebäude - Telescopagem guas trepadoras - Telescopagem sobre lajes



Number of tower section	H (m.)
5S+2N+T	33.40
5S+3N+T	37.30
5S+4N+T	41.20

N = Standard mast element  
 T = Telescopic element  
 S = Special mast element

Meccanismi – Mechanisms – Mécanismes – Antriebe – Mecanismos

Sollevamento V45.60 Hoisting Elevaci6n			1a	2 m/min	6000 kg	33 kW	V45.60 57 kVA
			2a	20 m/min	6000 kg		
			3a	31 m/min	5000 kg		
			4a	46 m/min	3600 kg		
			5a	60 m/min	2600 kg		
			1a	1 m/min	12000 kg		
			2a	10 m/min	12000 kg		
			3a	15 m/min	10000 kg		
			4a	23 m/min	7200 kg		
			5a	30 m/min	5200 kg		
Sollevamento V80.100 Hoisting Elevaci6n			1a	2 m/min	6000 kg	60 kW	V80.100 80 kVA
			2a	40 m/min	6000 kg		
			3a	60 m/min	4000 kg		
			4a	80 m/min	3000 kg		
			5a	100 m/min	2600 kg		
			1a	1 m/min	12000 kg		
			2a	20 m/min	12000 kg		
			3a	30 m/min	8000 kg		
			4a	40 m/min	6000 kg		
			5a	50 m/min	5200 kg		
Carrello Trolleying Distribuci6n			1a	5 m/min	12000 kg	5.5 kW	Potenza elettrica necessaria Puissance électrique nécessaire Necessary electric power Anschlusswert   Potencia
			2a	40 m/min	12000 kg		
			3a	80 m/min	6000 kg		
Rotazione Slewing Orientaci6n			1a	0 → 0.2	giri/min tr/min	6.6 kW @ 1200rpm n° 3 x 2.2 kW	
			2a	0 → 0.6	rp/min		
			3a	0 → 0.9			
Traslazione Travelling Traslaci6n			1a	0 → 5		9 kW	
			2a	0 → 20			

Rete elettrica – Réseau – Mains supply – Netzstrom – Red – Rede electrica

400V – 50 Hz



FMgru s.r.l.

via Emilia 11-29010 Pontenure PC ITALY  
tel. 0523/510446 ric.cab. fax 0523/510385  
www.fmgru.com e-mail: info@fmgru.com

FEM 1.001  
2000/14/CE



Documento commerciale non contrattuale  
Par toutes les informations techniques référez  
aux correspondants instructions

Unverbindliches Vertriebsdokument.  
Für technische Informationen, siehe die  
entsprechenden Anweisungen.

This commercial document is not legally  
binding. For any technical information, please  
refer to the corresponding instructions.

Documento commerciale non contrattuale  
Para cualquier información técnica,  
ver la redice correspondiente.

Code: 15ICAS7M78A0

Ed. Data. Rev. Data.  
1. 05.05.03. 05.06.03