

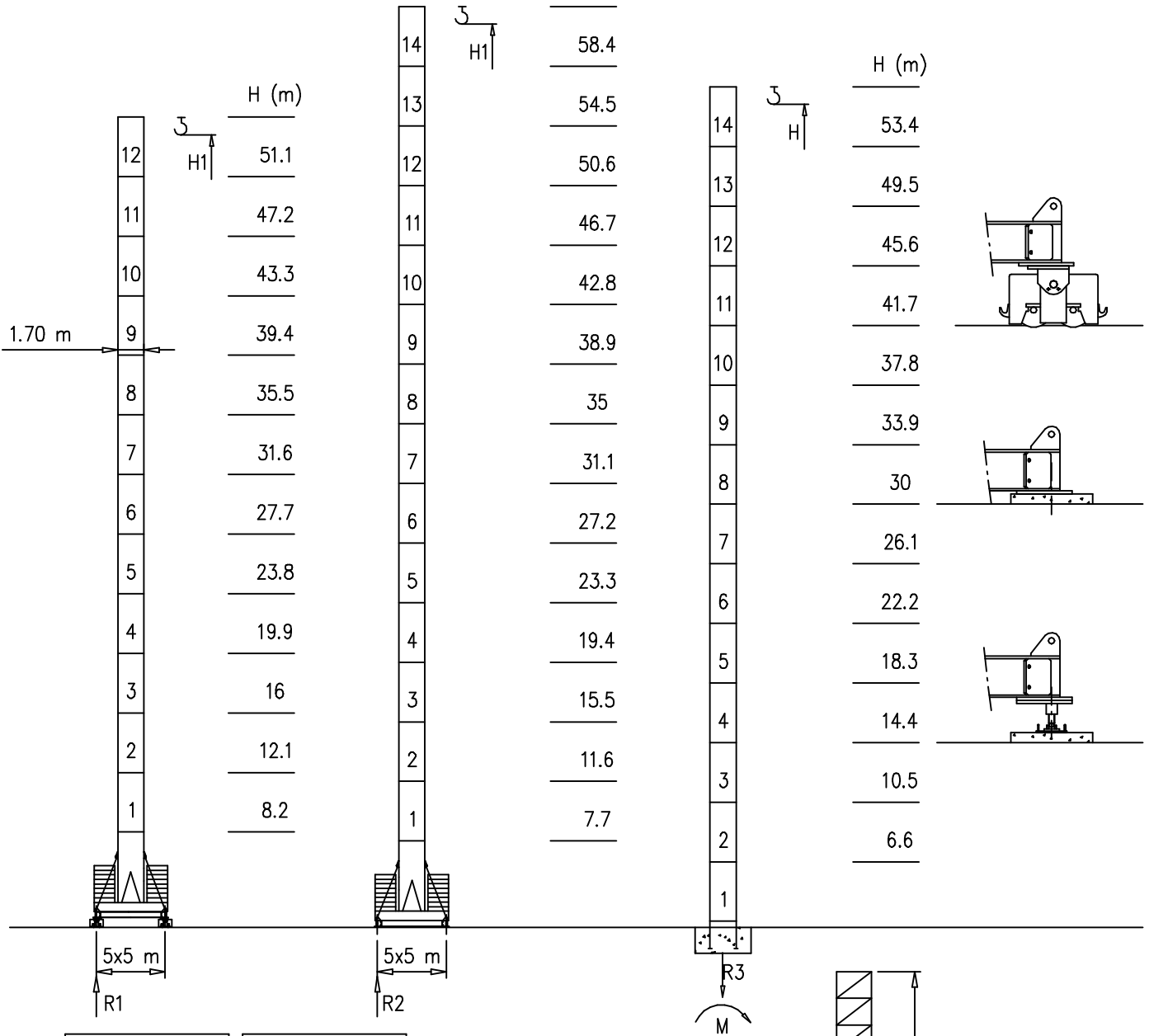
- S1700 – 1.70x1.70 m
- S2050 – 2.05x2.05 m

Torre/Reazioni – Masts/Reactions – Mat/Réactions – Maste/Eckdrücke – Mástil/Reacciones – Tramo/Reações

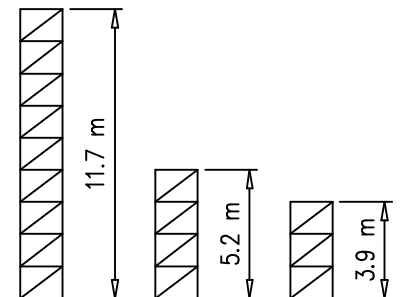
S1700

56 m → 65 m

H1 (m)

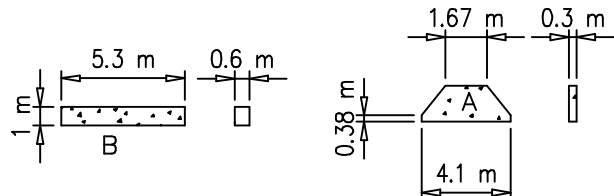


H=46–56 m		H=0–45 m	
R1	106 t	R1	89 t
R2	106 t	R2	88 t
R3	95 t	R3	74 t
M	336 tm	M	194 tm



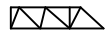
Peso zavorra – Ballast weight – Poids du lest – Ballastgewicht – Peso de lastre

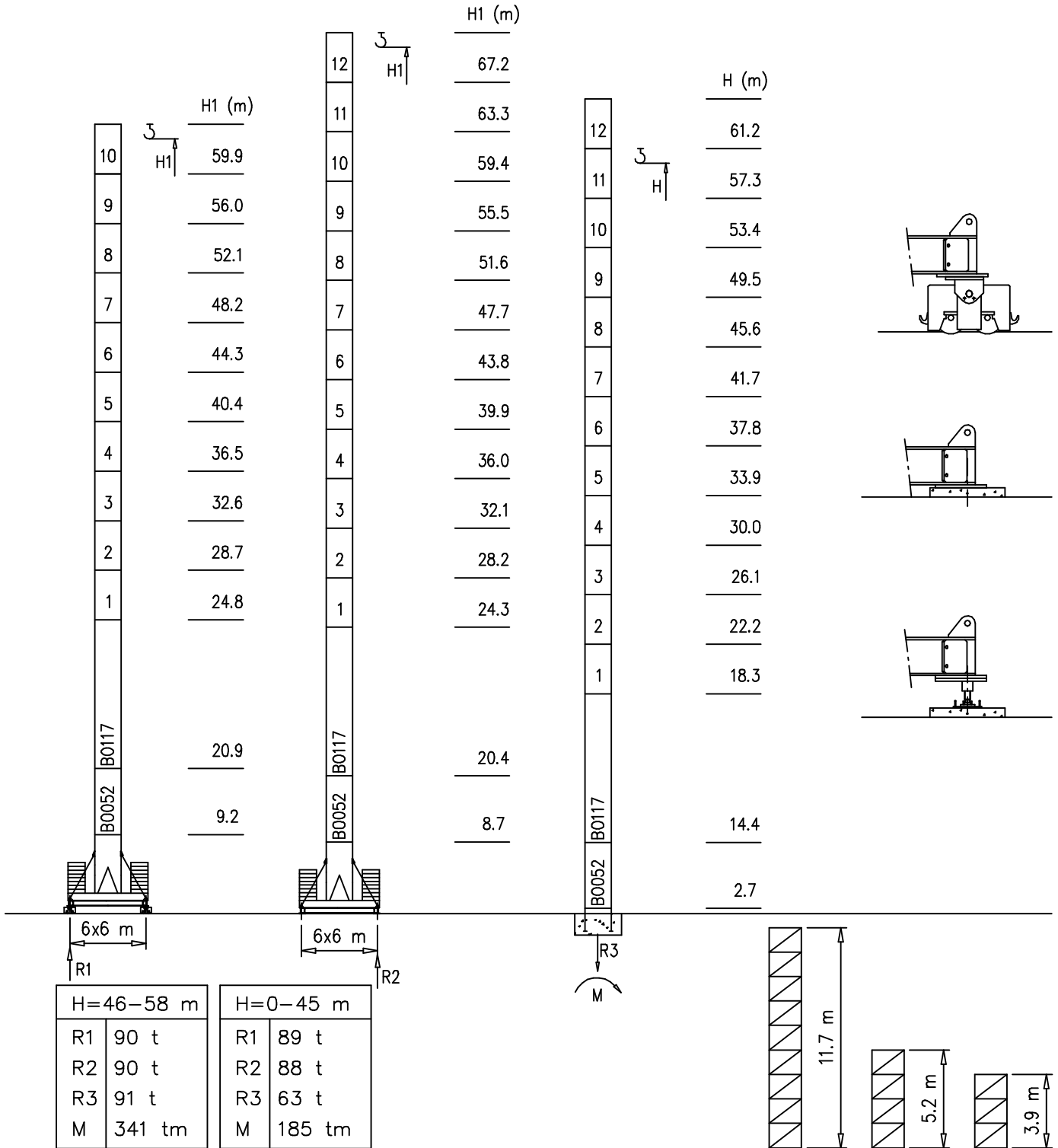
H	n°	Tot.
0–35 m	2B+14A	63600 kg
36–45 m	2B+16A	70600 kg
46–58 m	2B+26A	105600 kg



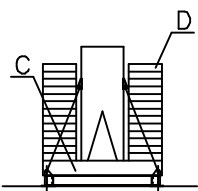
Torre/Reazioni – Masts/Reactions – Mat/Réactions – Maste/Eckdrücke – Mástil/Reacciones – Tramo/Reacções

S2050

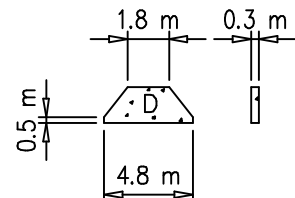
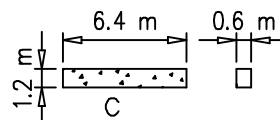
 56 m → 65 m



Peso zavorra – Ballast weight – Poids du lest – Ballastgewicht – Peso de lastre

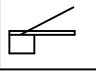
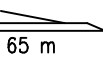
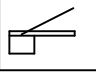
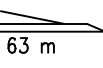
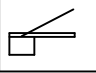
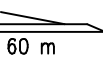
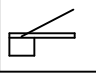
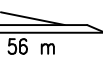


H	n°	Tot.
0-55 m	2C+ 16D	102320 kg
56-67 m	2C+ 18D	112460 kg

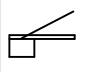
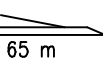
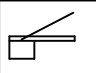
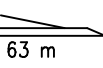
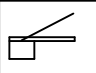
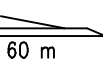
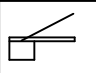
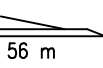


Curve di carico – Courbes de charges – Load diagrams – LastKurven – Curvas de cargas

Pmax 4000 kg

	25600 kg		3.5	30	34	36	38	40	42	44	46	48	50	52	54	56	58	60	62	65	m
			4000	4000	3360	3190	2940	2770	2490	2350	2220	2110	1950	1850	1760	1650	1570	1500	1300	1000	kg
	25600 kg		3.5	30	34	36	38	40	42	44	46	48	50	52	54	56	58	60	63	m	
			4000	4000	3360	3190	2940	2770	2490	2350	2220	2110	1950	1850	1760	1650	1570	1500	1300	kg	
	25600 kg		3.5	30	34	36	38	40	42	44	46	48	50	52	54	56	58	60	m		
			4000	4000	3480	3250	3050	2860	2700	2550	2410	2280	2170	2060	1960	1870	1780	1700	kg		
	25600 kg		3.5	34	36	38	40	42	44	46	48	50	52	54	56	m					
			4000	4000	3730	3510	3300	3030	2870	2670	2540	2400	2300	2130	2000	kg					

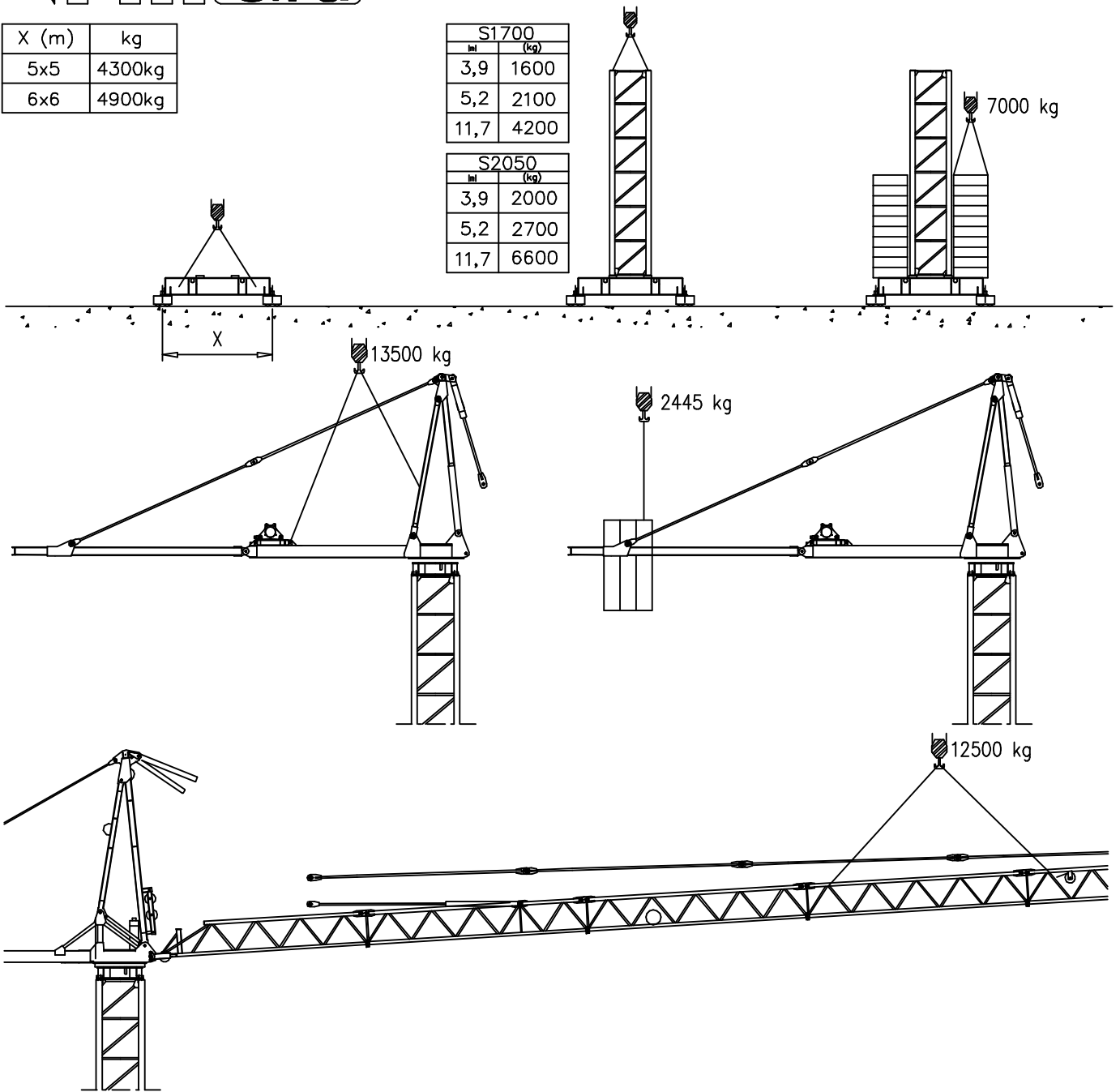
Pmax 8000/4000 kg

	25600 kg		3.5	16	20	24	28	30	34	36	38	40	42	44	46	48	50	52	54	56	58	60	62	65	m
			8000	8000	6360	5190	4360	4000	3360	3190	2940	2770	2490	2350	2220	2110	1950	1850	1760	1650	1570	1500	1300	1000	kg
	25600 kg		3.5	16	20	24	28	30	34	36	38	40	42	44	46	48	50	52	54	56	58	60	63	m	
			8000	8000	6360	5190	4360	4000	3360	3190	2940	2770	2490	2350	2220	2110	1950	1850	1760	1650	1570	1500	1300	kg	
	25600 kg		3.5	16	20	24	28	30	34	36	38	40	42	44	46	48	50	52	54	56	58	60	m		
			8000	8000	6360	5190	4360	4000	3480	3250	3050	2860	2700	2550	2410	2280	2170	2060	1960	1870	1780	1700	kg		
	25600 kg		3.5	18	20	24	28	30	34	36	38	40	42	44	46	48	50	52	54	56	m				
			8000	8000	7500	6150	5190	4810	4000	3730	3510	3300	3030	2870	2670	2540	2400	2300	2130	2000	kg				

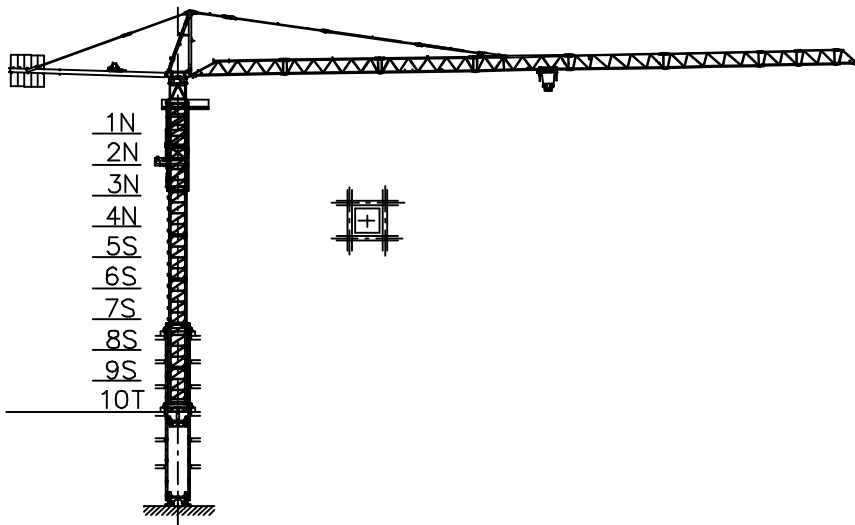
X (m)	kg
5x5	4300kg
6x6	4900kg

S1700	
l (m)	(kg)
3,9	1600
5,2	2100
11,7	4200

S2050	
l (m)	(kg)
3,9	2000
5,2	2700
11,7	6600



Gru in cavedio - Climbing crane - Télescopage sur dalles - Kletterkrane in Gebäude - Telescopage gruas trepadoras - Telescopagem sobre lages



Number of tower section	H (m.)
5S+2N+T	33.40
5S+3N+T	37.30
5S+4N+T	41.20

N = Standard mast element
 T = Telescopic element
 S = Special mast element

Sollevamento V33.60 Hoisting Levage Heben Elevaciòn Elevaçao	▲ ▼		1a	4 m/min	4000 kg	24 kW	V33.60 40 kVA
			2a	20m/min	4000 kg		
			3a	32 m/min	3500 kg		
			4a	46 m/min	2200 kg		
			5a	60 m/min	1600 kg		
			1a	2 m/min	8000 kg		
			2a	10 m/min	8000 kg		
			3a	16 m/min	7000 kg		
			4a	23 m/min	4400 kg		
			5a	30 m/min	3200 kg		
Sollevamento V60.100 Hoisting Levage Heben Elevaciòn Elevaçao	▲ ▼		1a	2 m/min	4000 kg	45 kW	V60.100 66 kVA
			2a	40 m/min	4000 kg		
			3a	60 m/min	3500 kg		
			4a	80 m/min	2600 kg		
			5a	100 m/min	2200 kg		
			1a	1 m/min	8000 kg		
			2a	20 m/min	8000 kg		
			3a	30 m/min	7000 kg		
			4a	40 m/min	5200 kg		
			5a	50 m/min	4400 kg		
Carrello Trolleying Distribution Katzfahren Distribuciòn Distribuiçao	◀ ▶		1a	5 m/min	8000 kg	4 kW	Potenza elettrica necessaria Puissance électrique nécessaire Necessary electric power Anschlusswert – Potencia
			2a	25 m/min	8000 kg		
			3a	50 m/min	4000 kg		
Rotazione Slewing Orientation Schwenken Orientaciòn Rotaçao			1a	0 → 0.2	giri/min tr/min rp/min	4.4 kW @ 1200rpm n° 2 x 2.2 kW	
			2a	0 → 0.6			
			3a	0 → 0.9			
Traslazione Travelling Translation Kranfahren Traslaciòn Traslaçao	◀ ▶		1a	0 → 5	7.5 kW		
			2a	0 → 20			

Rete elettrica – Réseau – Mains supply – Netzstrom – Red – Rede electrica	400V – 50 Hz
---	--------------

AFM Gru FMgru s.r.l.
 via Emilia 11–29010 Pontenure PC ITALY
 tel. 0523/510446 ric.aut. fax 0523/510365
 www.fmgru.com e-mail: info@fmgru.com

FEM 1.001
2000/14/CE



Documento commerciale non contrattuale
Per tutte le informazioni tecniche riferirsi
alle corrispondenti istruzioni

Unverbindliches Vertriebsdokument.
Für technische Informationen, siehe die
entsprechenden Anweisungen.

This commercial document is not legally
binding. For any technical information, please
refer to the corresponding instructions.

Documento comercial no contractual
Para cualquier información técnica,
ver la noticia correspondiente.

Code: 15CA37K35A1			
Ed.	Data	Rev	Data
1	05.06.03	1	27.09.05