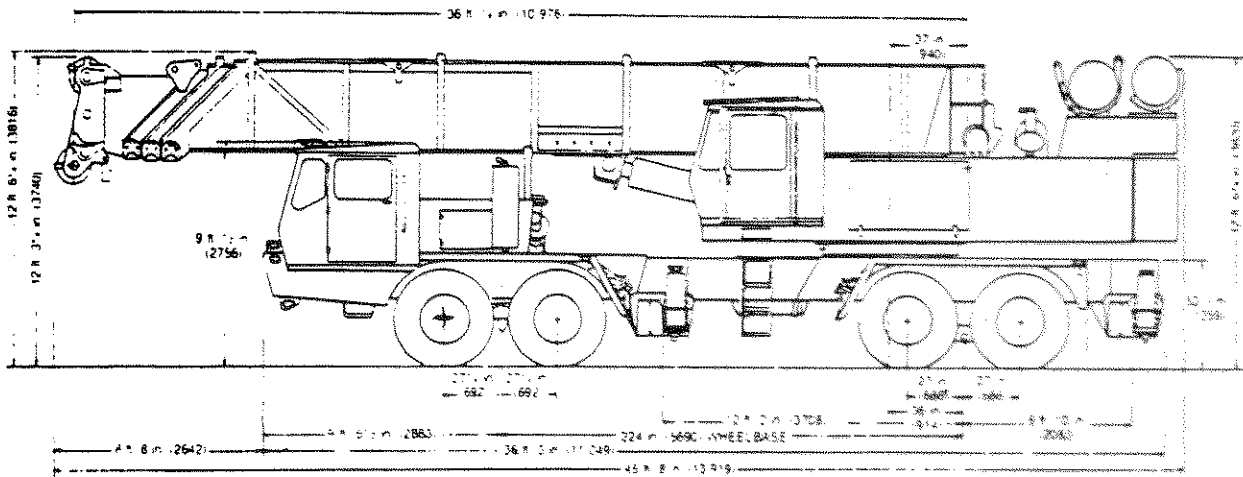


General Specifications

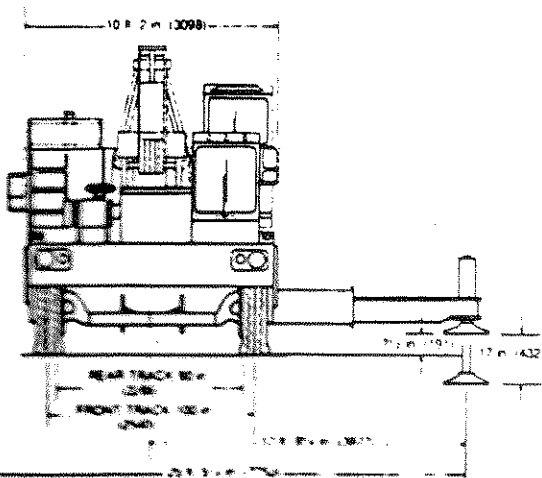
202 FEET BOOM AND JIB

80 TON

TURNING RADIUS - 42 ft. 2½ in. (12 865)
 GROUND CLEARANCE - 12 in. (with float removed) (305)
 TAIL SWING - 12 ft. ½ in. (counterweight in travel position) (3670)
 TAIL SWING - 14 ft. ½ in. (counterweight in working position) (4280)
 NOTE: Dimensions shown in parentheses are millimeters (mm)



TURNING RADIUS - 42 ft. 2½ in. (12 865)
 GROUND CLEARANCE - 12 in. (with float removed) (305)
 TAIL SWING - 12 ft. ½ in. (counterweight in travel position) (3670)
 TAIL SWING - 14 ft. ½ in. (counterweight in working position) (4280)
 NOTE: Dimensions shown in parentheses are millimeters (mm)



Lifting Capacities

OVER SIDE AND REAR WITH OUTRIGGERS FULLY EXTENDED

Radius in Feet	Boom Length in Feet								Power Pin. Fly & 88 ft. **114	32 ft. Ext. & 114 ft. **146
	*36	44	52	60	68	76	82	88		
12	160,000 (65.5)	125,000 (70.0)	110,000 (73.0)	99,000 (75.5)	92,000 (77.5)	87,000 (79.0)				
15	125,000 (60.0)	112,500 (66.0)	103,000 (69.5)	94,800 (72.5)	88,200 (74.5)	82,300 (76.5)	74,150 (78.0)	63,000 (79.0)		
20	93,500 (50.0)	90,250 (58.5)	86,400 (63.5)	81,900 (67.5)	76,600 (70.5)	70,150 (72.5)	65,900 (74.0)	59,850 (75.5)	50,000 (79.5)	
25	72,500 (39.0)	70,950 (50.5)	68,900 (57.5)	66,200 (62.0)	62,500 (65.5)	57,050 (68.5)	55,250 (70.5)	54,000 (72.0)	45,000 (77.5)	30,000 (79.5)
30	56,000 (23.5)	56,000 (41.5)	56,000 (50.5)	54,900 (56.5)	52,350 (61.0)	47,600 (64.5)	46,000 (66.5)	44,700 (68.5)	39,250 (75.0)	28,400 (78.5)
35		42,090 (30.0)	42,090 (43.0)	42,090 (50.5)	42,090 (56.0)	40,500 (60.0)	39,050 (63.0)	37,850 (65.0)	33,900 (72.0)	25,900 (76.5)
40		32,430 (11.5)	32,430 (34.0)	32,430 (44.0)	32,430 (51.0)	32,430 (56.0)	32,430 (59.0)	32,430 (61.5)	29,650 (69.5)	23,800 (74.5)
45			26,270 (22.5)	26,270 (37.0)	26,270 (45.0)	26,270 (51.0)	26,270 (54.5)	26,270 (57.5)	26,150 (67.0)	21,900 (72.5)
50				21,190 (28.0)	21,190 (39.0)	21,190 (46.0)	21,190 (50.0)	21,190 (53.5)	23,300 (64.0)	20,300 (70.5)
60					14,030 (22.0)	14,030 (34.0)	14,030 (40.0)	14,030 (45.0)	17,250 (58.0)	17,100 (66.0)
70						10,300 (16.0)	10,300 (27.5)	10,300 (34.5)	12,480 (52.0)	14,100 (61.5)
80								6,610 (20.0)	9,160 (45.0)	10,800 (57.0)
90									6,690 (37.0)	8,100 (52.0)
100									4,490 (27.0)	6,060 (46.5)
110									2,830 (9.0)	4,540 (40.5)
120										3,210 (34.0)
130										2,170 (25.5)
140										1,310 (17.5)

NOTE: Boom Angle (degrees) required for given lift appears below the load.

A6-829-002037 & -002043

TRAPEZOIDAL BOOM and 32 ft. EXT. NOTES

Capacities appearing in the shaded area are based on structural strength and tipping should not be relied upon as a capacity limitation.
 *Capacities for 36 ft. boom length shall be lifted with boom fully retracted. If boom is not fully retracted, capacities shall not exceed those shown for 44 ft. boom length.
 **Boom must be fully extended when lifting with extended power pinned fly or with 32 ft. boom ext.
 Capacities do not exceed 85% of tipping loads with counterweight fully extended as determined by test in accordance with SAE J-765.
 Do not exceed any rated load when lifting regardless of whether it is based on structural strength or stability.