

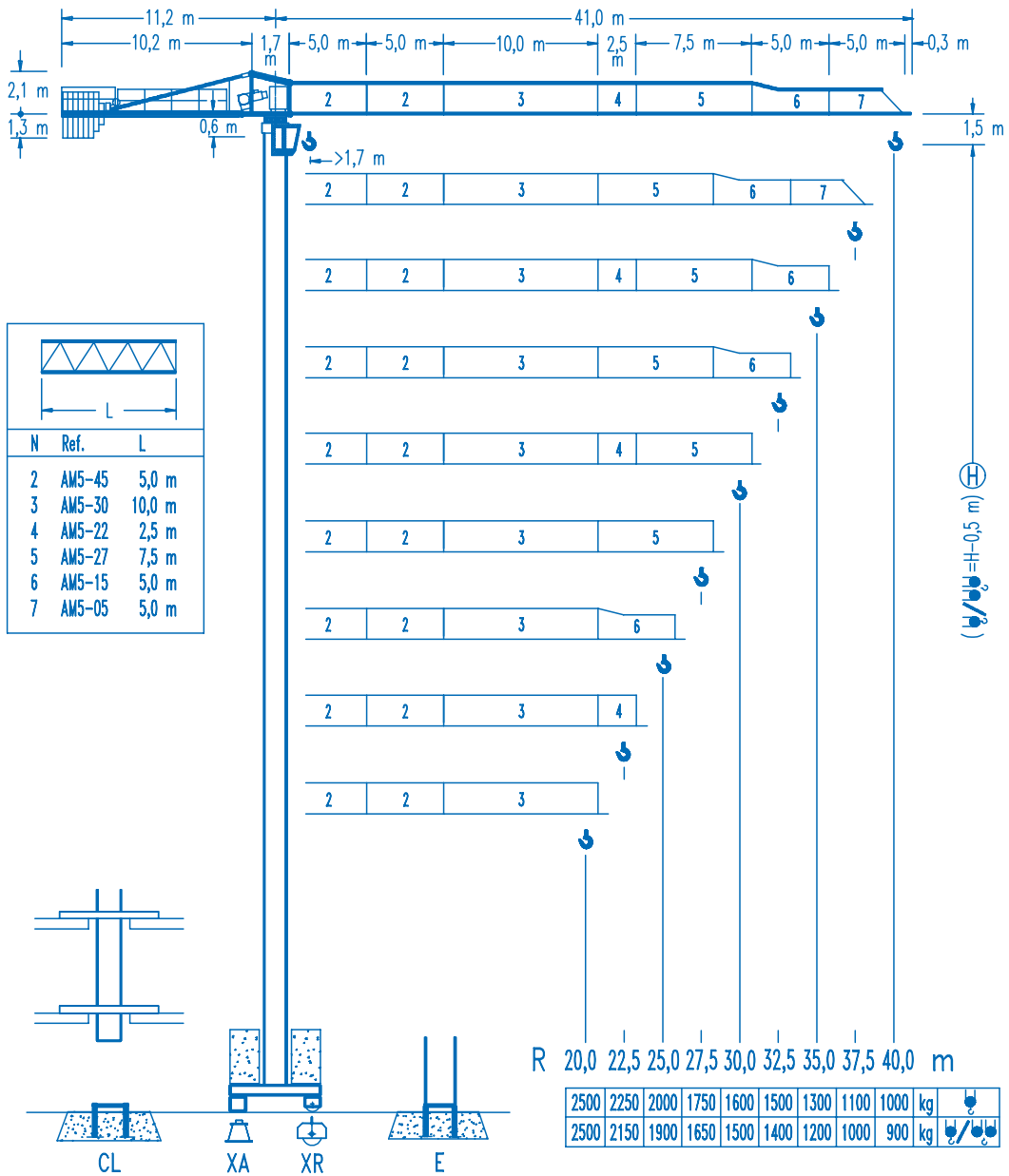


**COMANSA**

**LINDEN 500**

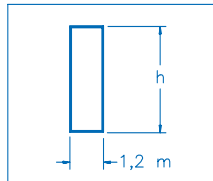
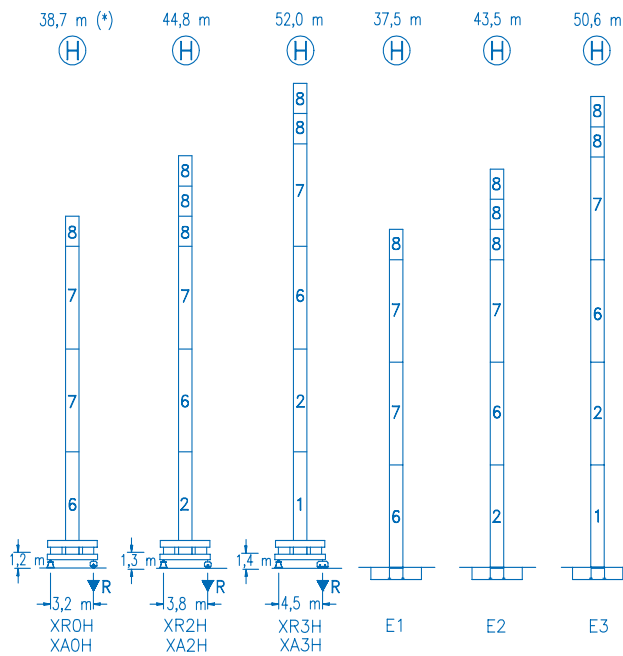
**5 LC 4010**

**5 t**



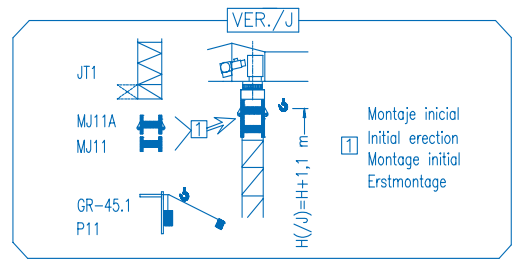
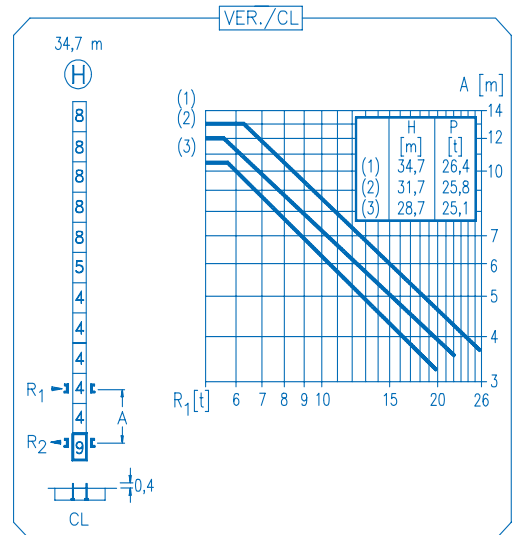
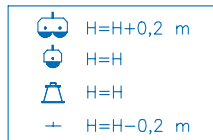
**CE**  
DIN 15018 H1 B3

R	R(Cmax)	Cmax	20,0	22,5	25,0	27,5	30,0	32,5	35,0	37,5	40,0	
40,0		2500	2260	1980	1750	1570	1420	1290	1180	1080	1000	
		5000	2200	1910	1680	1490	1330	1200	1080	990	900	
37,5		2500	2300	2010	1780	1590	1440	1310	1200	1100	1000	
		5000	2230	1930	1700	1510	1350	1210	1100	1000		
35,0		2500	2480	2170	1930	1730	1560	1420	1300	1200		
		5000	2410	2090	1840	1640	1470	1320	1200			
32,5		2500	2500	2290	2030	1820	1650	1500				
		5000	2540	2210	1940	1730	1550	1400				
30,0		2500	2500	2230	1970	1770	1600					
		5000	2460	2140	1880	1670	1500					
27,5		2500	2500	2200	1950	1750						
		5000	2430	2110	1860	1650						
25,0		2500	2500	2260	2000							
		5000	2480	2160	1900							
22,5		2500	2500	2250								
		5000	2470	2150								
20,0		2500	2500									
		5000	2500									



N	Ref.	h
1	MT123	10,1 m
2	MH124A	11,8 m
4	MH121	3,0 m
5	MH121A	3,0 m
6	MH114A	11,8 m
7	MH114	11,8 m
8	MH111	3,0 m
9	CL20	2,2 m

MH114=(4)MH111-0,2 m



(\*) SIN CAB. - CAB. NO. - SANS CAB. - KAB. NEIN.

R. máx.	En servicio In operation En service In Betrieb	XR0H ..... 40,3 t XR2H ..... 44,4 t XR3H ..... 46,7 t
---------	---------------------------------------------------------	-------------------------------------------------------------

R. máx.	Fuera de servicio Out of service Hors service Ausser Betrieb	XR0H ..... 58,6 t XR2H ..... 72,5 t XR3H ..... 80,9 t
---------	-----------------------------------------------------------------------	-------------------------------------------------------------

**CS2-1.9**  
1,9 kW  
16 m/min  
48 m/min

**CFU-2.2**  
2,2 kW  
0 ⇄ 80 m/min

**GR-6.5**  
65 Nm  
0 ⇄ 0,8 rpm

TS2-3.0	TS2-4.5	TS2-5.5
2x30 Nm	2x45 Nm	2x55 Nm
0 ⇄ 20 m/min		
XR0H	XR2H	XR3H

**ES3-18-12**  
18 kW

	I	II	III
m/min	8	32	64
kg	2500	2500	1300
m/min	4	16	32
kg	5000	5000	2600

**ES3-13-12**  
13,2 kW

	I	II	III
m/min	6	24	48
kg	2500	2500	1300
m/min	3	12	24
kg	5000	5000	2600

**EFU2-18-12**  
18 kW

**EFU2-11-12**  
11 kW

Tensión de alimentación Operating voltage Tension de service Betriebsspannung	<b>400 V</b> <b>3 ph</b> <b>50 Hz</b>
----------------------------------------------------------------------------------------	---------------------------------------------

Opcional  
Optional  
En option  
Kaufoption