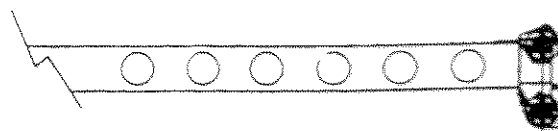


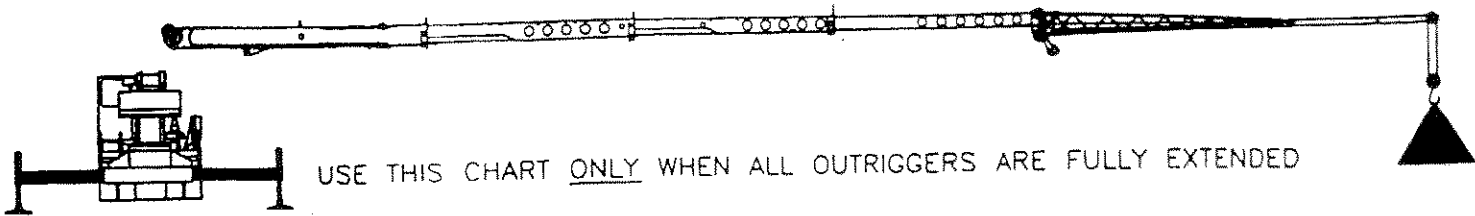
USE THIS CHART ONLY WHEN ALL OUTRIGGERS ARE FULLY EXTENDED

| RATED LOAD ON OUTRIGGERS | | | | | | | | | | | |
|--------------------------|-------------------------|----------------|-----------|-------------------|-------------------------|----------------|-----------|-------------------|-------------------------|----------------|-----------|
| LOAD RADIUS (FT) | LOADED BOOM ANGLE (DEG) | OVER REAR (LB) | 360° (LB) | LOAD RADIUS (FT) | LOADED BOOM ANGLE (DEG) | OVER REAR (LB) | 360° (LB) | LOAD RADIUS (FT) | LOADED BOOM ANGLE (DEG) | OVER REAR (LB) | 360° (LB) |
| BOOM LENGTH 33.75 FT | | | | BOOM LENGTH 45 FT | | | | BOOM LENGTH 57 FT | | | |
| 9.0 | 67.8 | 8000* | 8000* | | | | | | | | |
| 10.0 | 66.0 | 64400* | 64400* | 10.0 | 72.3 | 46500* | 46500* | | | | |
| 12.0 | 62.1 | 58000* | 58000* | 12.0 | 69.6 | 46500* | 46500* | 12.0 | 74.0 | 46500* | 46500* |
| 15.0 | 56.1 | 50700* | 50700* | 15.0 | 65.4 | 46500* | 46500* | 15.0 | 70.8 | 44500* | 44500* |
| 20.0 | 44.8 | 39600* | 38400* | 20.0 | 58.1 | 38800* | 38800* | 20.0 | 65.4 | 36400* | 36400* |
| 25.0 | 30.2 | 29900* | 28600* | 25.0 | 50.1 | 30900* | 29600* | 25.0 | 59.7 | 31000* | 30200* |
| 29.1 | .0 | 24300* | 22500 | 30.0 | 40.9 | 24500* | 22500 | 30.0 | 53.6 | 25100* | 23100 |
| | | | | 35.0 | 29.5 | 19300 | 16800 | 35.0 | 46.9 | 19900 | 17300 |
| BOOM LENGTH 69 FT | | | | 40.0 | 8.4 | 15100 | 12700 | 40.0 | 39.4 | 15800 | 13400 |
| | | | | 40.3 | .0 | 14800 | 12400 | 45.0 | 30.4 | 12800 | 10700 |
| | | | | BOOM LENGTH 81 FT | | | | 50.0 | 17.5 | 10500 | 8500 |
| | | | | | | | | 52.3 | .0 | 9500 | 7600 |
| 15.0 | 74.3 | 41600* | 41600* | | | | | BOOM LENGTH 93 FT | | | |
| 20.0 | 69.9 | 34800* | 34800* | 20.0 | 73.0 | 30600* | 30600* | | | | |
| 25.0 | 65.4 | 29400* | 29400* | 25.0 | 69.2 | 26000* | 26000* | 25.0 | 72.0 | 23400* | 23400* |
| 30.0 | 60.7 | 25400* | 23400 | 30.0 | 65.4 | 22500* | 22500* | 30.0 | 68.7 | 20300* | 20300* |
| 35.0 | 55.8 | 20200 | 17600 | 35.0 | 61.4 | 19600* | 17800 | 35.0 | 65.4 | 17700* | 17700* |
| 40.0 | 50.5 | 16100 | 13700 | 40.0 | 57.3 | 16300 | 13900 | 40.0 | 61.9 | 15500* | 14100 |
| 45.0 | 44.8 | 13200 | 11000 | 45.0 | 52.9 | 13400 | 11200 | 45.0 | 58.3 | 13500 | 11300 |
| 50.0 | 38.4 | 10900 | 8900 | 50.0 | 48.3 | 11100 | 9100 | 50.0 | 54.6 | 11300 | 9200 |
| 55.0 | 31.0 | 9100 | 7300 | 55.0 | 43.3 | 9400 | 7500 | 55.0 | 50.7 | 9500 | 7600 |
| 60.0 | 21.3 | 7600 | 5900 | 60.0 | 37.7 | 7900 | 6200 | 60.0 | 46.6 | 8100 | 6300 |
| 64.3 | .0 | 6500 | 4800 | 65.0 | 31.4 | 6700 | 5100 | 65.0 | 42.1 | 6900 | 5200 |
| BOOM LENGTH 105 FT | | | | 70.0 | 23.5 | 5700 | 4200 | 70.0 | 37.2 | 5900 | 4300 |
| | | | | 75.0 | 11.1 | 4800 | 3400 | 75.0 | 31.7 | 5000 | 3600 |
| | | | | 76.3 | .0 | 4500 | 3100 | 80.0 | 25.1 | 4200 | 2900 |
| 30.0 | 71.3 | 18600* | 18600* | | | | | 85.0 | 16.0 | 3600 | 2300 |
| 35.0 | 68.4 | 16200* | 16200* | | | | | 88.3 | .0 | 3100 | 1900 |
| 40.0 | 65.4 | 14400* | 14200 | | | | | | | | |
| 45.0 | 62.3 | 12900* | 11400 | | | | | | | | |
| 50.0 | 59.2 | 11400 | 9300 | | | | | | | | |
| 55.0 | 55.9 | 9600 | 7700 | | | | | | | | |
| 60.0 | 52.5 | 8200 | 6400 | | | | | | | | |
| 65.0 | 49.0 | 7000 | 5300 | | | | | | | | |
| 70.0 | 45.2 | 6000 | 4400 | | | | | | | | |
| 75.0 | 41.2 | 5100 | 3700 | | | | | | | | |
| 80.0 | 36.8 | 4400 | 3000 | | | | | | | | |
| 85.0 | 31.9 | 3700 | 2500 | | | | | | | | |
| 90.0 | 26.2 | 3200 | 2000 | | | | | | | | |
| 95.0 | 18.9 | 2700 | 1500 | | | | | | | | |
| 100.0 | 5.2 | 2200 | 1100 | | | | | | | | |
| 100.3 | .0 | 2100 | 1000 | | | | | | | | |



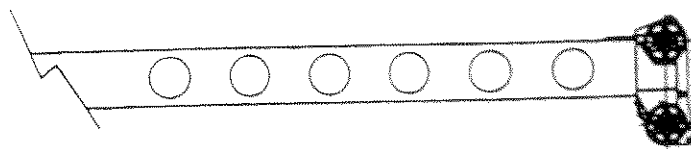
Add 100Lbs to the chart values if the AUX BOOM HEAD SHEAVE is NOT ERECTED.

Add 100Lbs to the chart values if the MAIN BOOM HEAD is equipped with nylon sheaves.



USE THIS CHART ONLY WHEN ALL OUTRIGGERS ARE FULLY EXTENDED

| 49 FT OFFSET JIB | | | | | | | | | |
|-------------------------|------------------------|----------------|-----------|------------------------|----------------|-----------|------------------------|----------------|-----------|
| LOADED BOOM ANGLE (DEG) | 0' OFFSET | | | 15' OFFSET | | | 30' OFFSET | | |
| | (REF) LOAD RADIUS (FT) | REAR ONLY (LB) | 360° (LB) | (REF) LOAD RADIUS (FT) | REAR ONLY (LB) | 360° (LB) | (REF) LOAD RADIUS (FT) | REAR ONLY (LB) | 360° (LB) |
| 75 | 47' | 5000* | 5000* | 57' | 3300* | 3300* | 66' | 2600* | 2600* |
| 73 | 52' | 4700* | 4700* | 63' | 3200* | 3200* | 71' | 2600* | 2600* |
| 71 | 58' | 4400* | 4400* | 69' | 3100* | 3100* | 76' | 2500* | 2500* |
| 68 | 65' | 4000* | 4000* | 76' | 2900* | 2900* | 82' | 2400* | 2400* |
| 65 | 72' | 3700* | 3700* | 83' | 2800* | 2800* | 89' | 2400* | 2400* |
| 62 | 79' | 3500* | 3500* | 89' | 2700* | 2700* | 95' | 2300* | 2300* |
| 59 | 86' | 3300* | 3300* | 95' | 2600* | 2600* | 101' | 2300* | 2300* |
| 55 | 93' | 3000* | 2600 | 102' | 2500* | 2400 | 107' | 2200* | 2200* |
| 51 | 101' | 2800* | 2000 | 108' | 2400* | 1900 | 113' | 2200* | 1700 |
| 47 | 108' | 2400 | 1500 | 114' | 2200 | 1400 | 119' | 2100* | 1200 |
| 43 | 115' | 1900 | 1100 | 120' | 1800 | 1000 | 125' | 1700 | 900 |
| 38 | 122' | 1500 | 700 | 127' | 1400 | | 131' | 1300 | |
| 32 | 130' | 1100 | | 134' | 1000 | | 136' | 1000 | |
| 25 | 139' | 700 | | 141' | 700 | | | | |



Add 100Lbs to the chart values if the AUX BOOM HEAD SHEAVE is NOT ERECTED.

SET-UP:


1. Crane load ratings are based on the crane being leveled and standing on a firm, uniform supporting surface.
2. Crane load ratings on outriggers are based on all outrigger beams being fully extended and the tires raised free of the supporting surface.

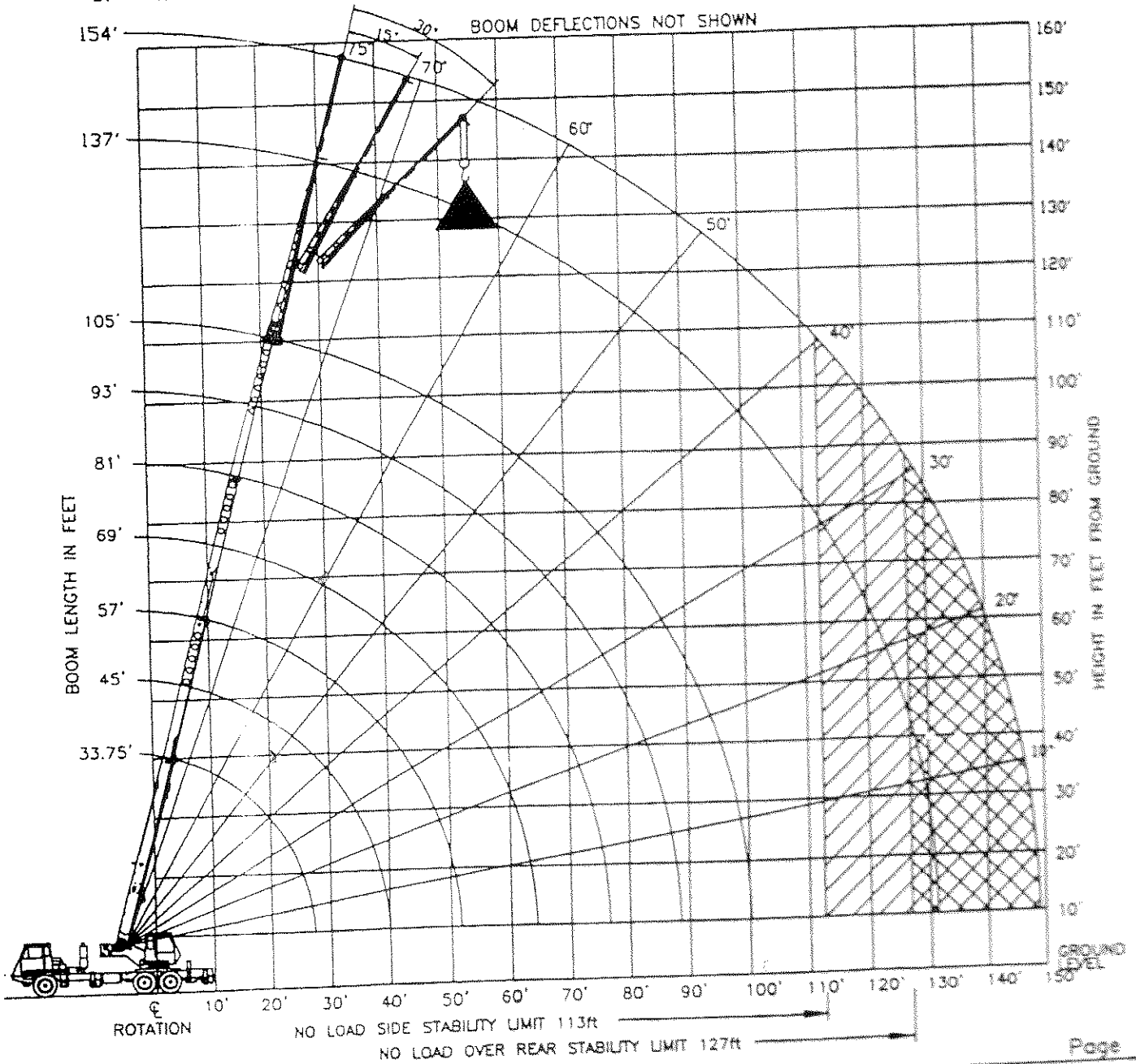


40 Ton Capacity Chart

| 32 FT Offset Jib | | | | | | | | | |
|-----------------------|------------------------|----------------|-----------|------------------------|----------------|-----------|------------------------|----------------|-----------|
| Loaded Boom Angle (°) | 0° Offset | | | 15° Offset | | | 30° Offset | | |
| | (Ref) Load Radius (FT) | Rear Only (LB) | 360° (LB) | (REF) Load Radius (FT) | Rear Only (LB) | 360° (LB) | (REF) Load Radius (FT) | Rear Only (LB) | 360° (LB) |
| 75 | 43 | 9200 | 9200 | 51 | 8400 | 8400 | 57 | 6500 | 6500 |
| 73 | 47 | 8800 | 8800 | 55 | 8100 | 8100 | 61 | 6300 | 6300 |
| 71 | 51 | 8400 | 8400 | 59 | 7700 | 7700 | 65 | 6200 | 6200 |
| 68 | 56 | 7800 | 7600 | 64 | 7300 | 6300 | 70 | 5900 | 5900 |
| 65 | 62 | 7200 | 6100 | 69 | 6700 | 5200 | 75 | 5800 | 5000 |
| 62 | 68 | 6300 | 5000 | 75 | 5600 | 4400 | 80 | 5500 | 4200 |
| 59 | 74 | 5200 | 4100 | 81 | 4800 | 3800 | 85 | 4800 | 3400 |
| 55 | 80 | 4300 | 3100 | 87 | 4100 | 2900 | 91 | 4000 | 2800 |
| 51 | 87 | 3600 | 2400 | 93 | 3400 | 2200 | 97 | 3400 | 2200 |
| 47 | 94 | 3000 | 1900 | 99 | 2800 | 1800 | 102 | 2800 | 1700 |
| 43 | 101 | 2400 | 1400 | 105 | 2300 | 1400 | 107 | 2200 | 1300 |
| 38 | 108 | 1800 | 900 | 112 | 1700 | 900 | 113 | 1700 | 800 |
| 32 | 115 | 1300 | | 119 | 1300 | | 120 | 1300 | |
| 25 | 122 | 900 | | 125 | 900 | | | | |

OPERATION:

1. CRANE LOAD RATINGS MUST NOT BE EXCEEDED. DO NOT ATTEMPT TO TIP THE CRANE TO DETERMINE ALLOWABLE LOADS.
2. When either radius or boom angle, or both, are between listed values, the smaller of the two listed load ratings shall be used.
3. Do not operate at longer radii than those listed on the applicable load rating chart (cross hatched  areas shown on range diagrams) as tipping can occur without a load on the hook.
4. The boom angles shown on the Capacity Chart give an approximation of the operating radius for a fully extended boom. The boom angle, before loading, should be greater to account for boom deflection. It may be necessary to retract the boom if maximum boom angle is insufficient to maintain rated radius.
5. Power telescoping boom sections must be extended equally.
6. For all boom lengths less than the maximum with the jib erected, the rated loads are determined by boom-angle only in the appropriate column.
7. For boom angles not shown, use the capacity of the next lower angle.
8. Listed radii are for fully extended boom only.



BASIC DIMENSIONS

