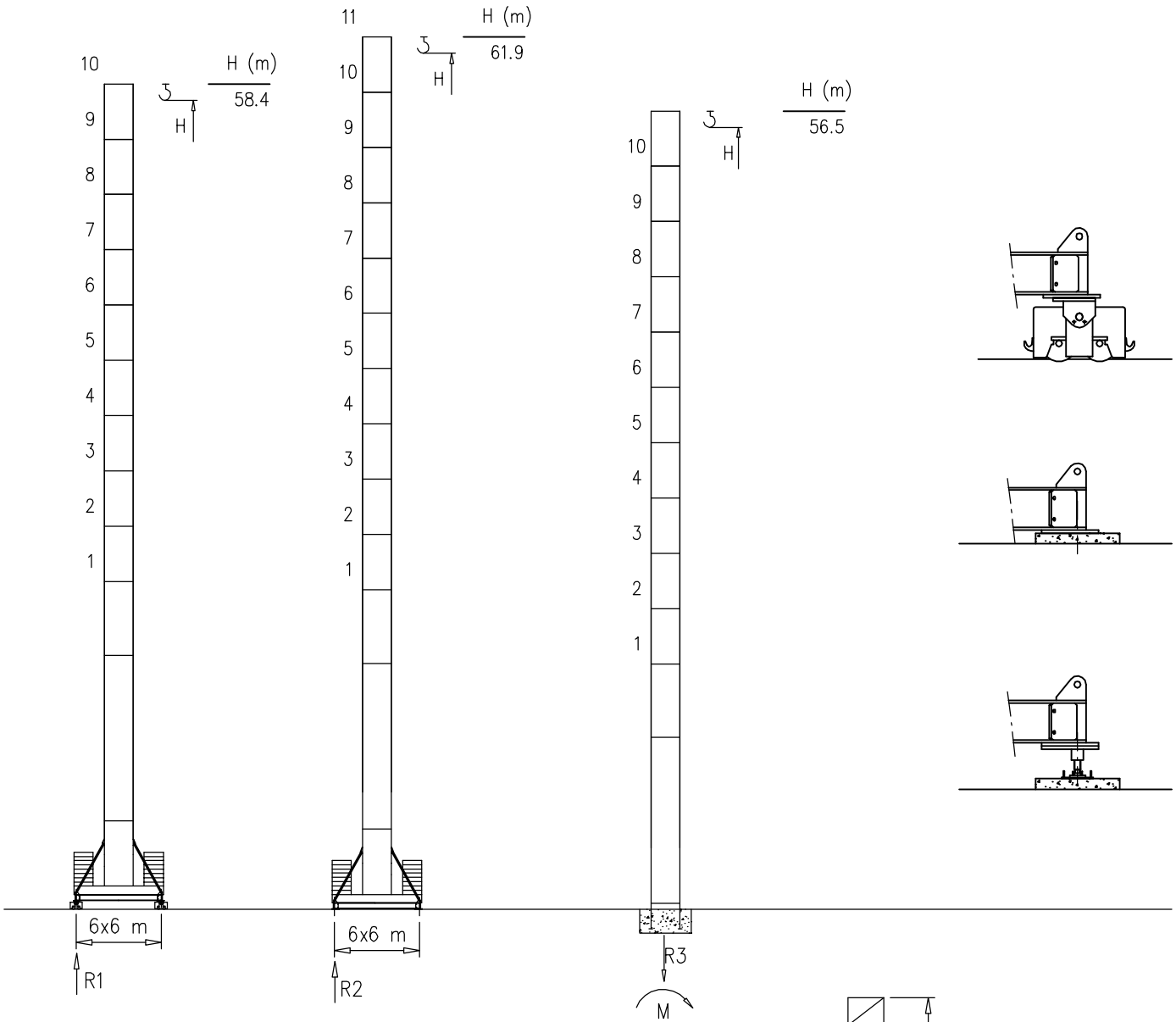
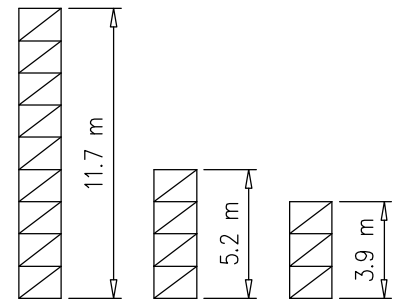


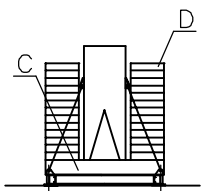
S2050



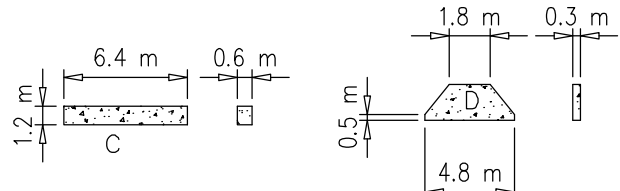
H=55–66 m	
R1	209 t
R2	217 t
R3	143 t
M	764 tm



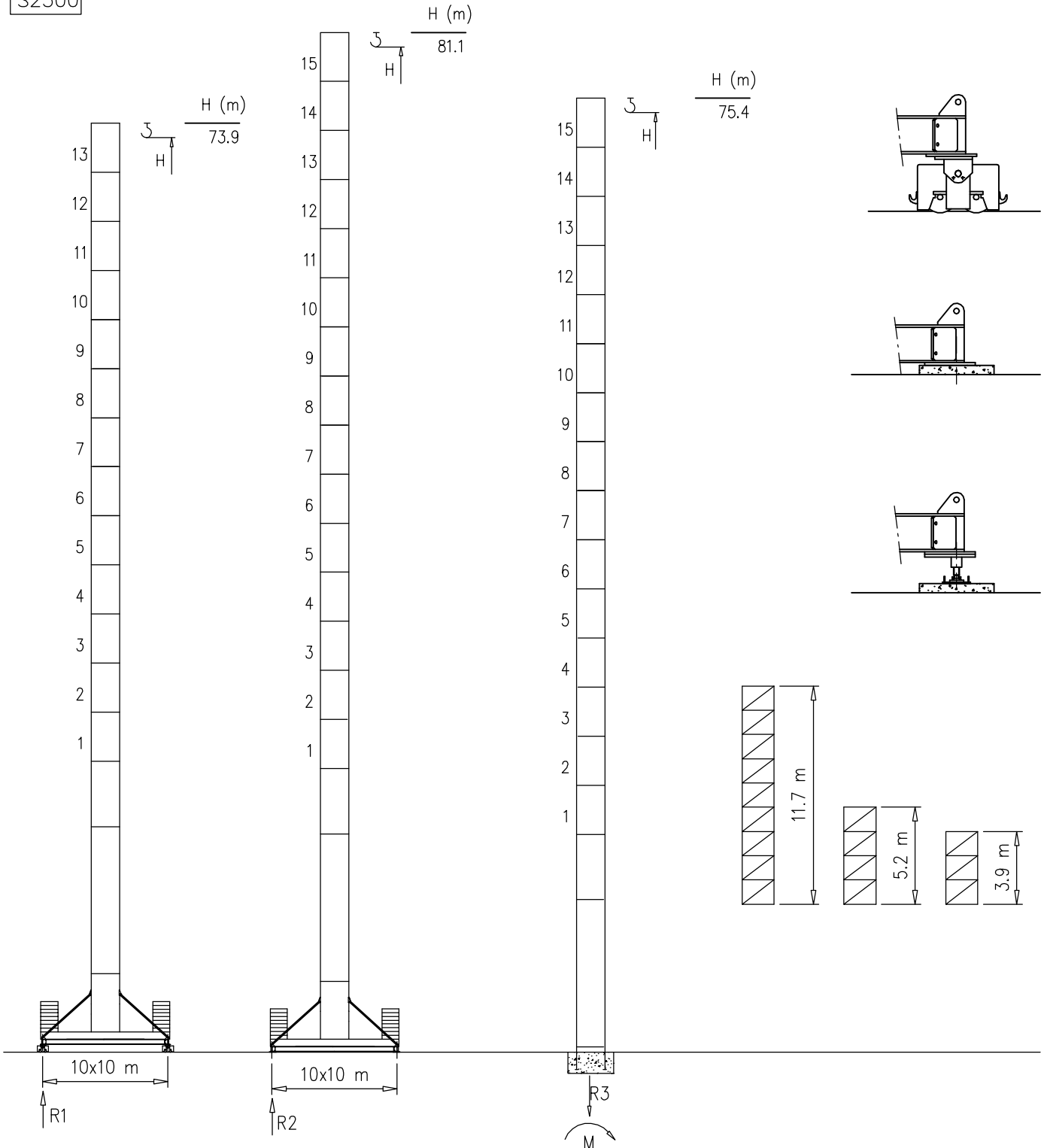
Peso zavorra – Ballast weight – Poids du lest – Ballastgewicht – Peso de lastre



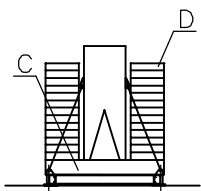
H	n°	Tot.
55–62 m	2C+28D	163160 kg



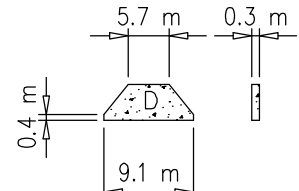
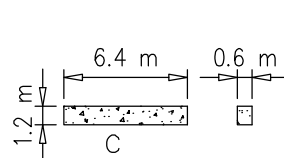
S2300



Peso zavorra – Ballast weight – Poids du lest – Ballastgewicht – Peso de lastre



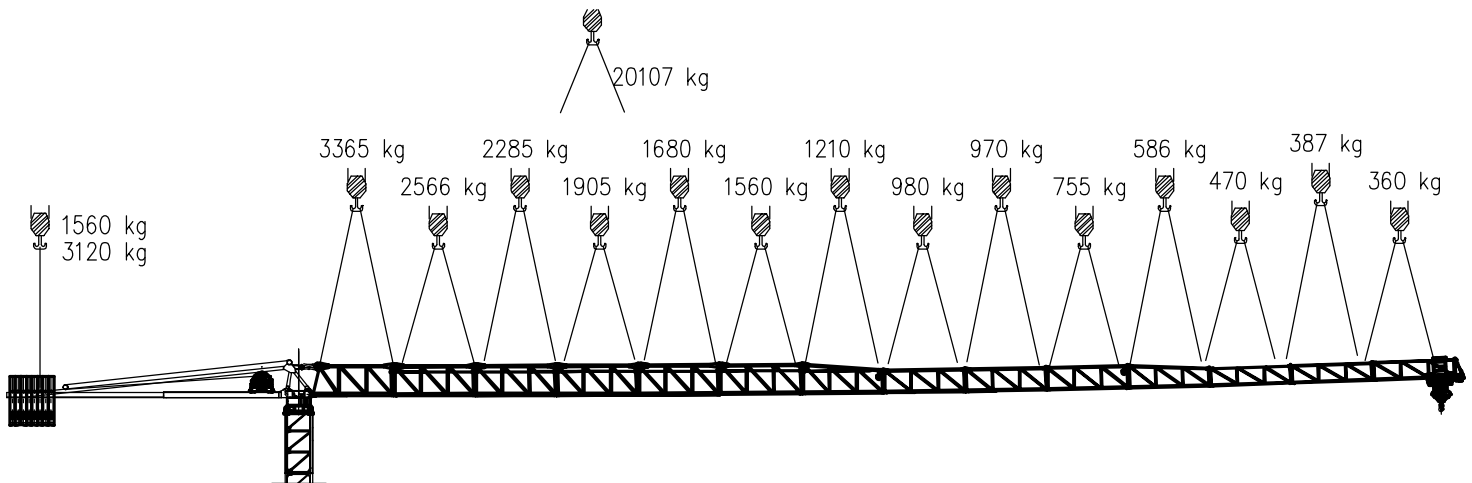
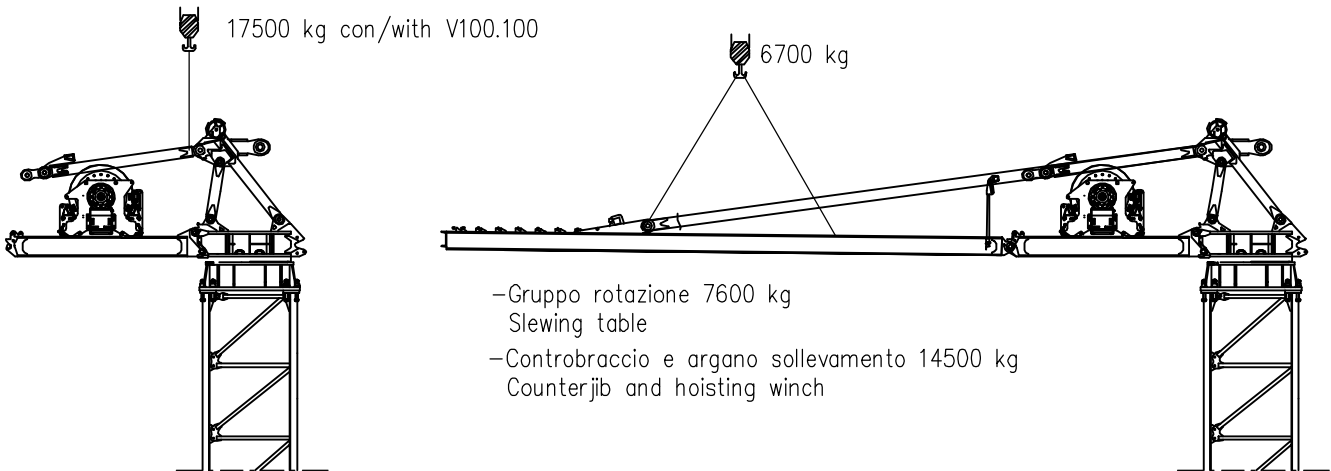
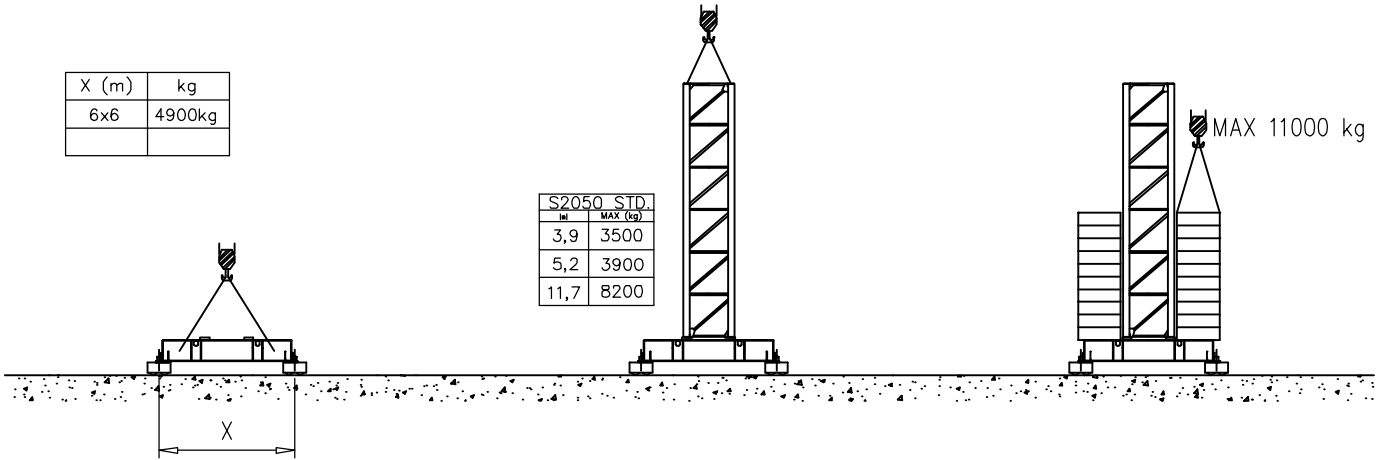
H	n°	Tot.
70–82 m	2C+14D	175000



Montaggio – Montage – Erection – Montage – Montaje – Montagem



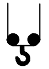

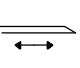


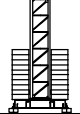
X (m)	kg
6x6	4900kg

S2050 STD.	
H	MAX (kg)
3,9	3500
5,2	3900
11,7	8200



Meccanismi – Mechanisms – Mécanismes – Antriebe – Mecanismos

Meccanismi – Mechanisms – Mécanismes – Antriebe – Mecanismos

Sollevamento V60.60 Hoisting Elevaci3n	▲ ▼		1a	2 m/min	8000 kg	45 kW	V60.60 57 kVA
			2a	20 m/min	8000 kg		
			3a	31 m/min	7000 kg		
			4a	46 m/min	4500 kg		
			5a	60 m/min	3000 kg		
		1a	1 m/min	16000 kg			
		2a	10 m/min	16000 kg			
		3a	15 m/min	14000 kg			
		4a	23 m/min	9000 kg			
		5a	30 m/min	6000 kg			
Sollevamento V100.100 Hoisting Elevaci3n	▲ ▼		1a	4 m/min	8000 kg	75 kW	V100.100 110 kVA
			2a	44 m/min	8000 kg		
			3a	68 m/min	5000 kg		
			4a	82 m/min	4000 kg		
			5a	100 m/min	3000 kg		
		1a	2 m/min	16000 kg			
		2a	22 m/min	16000 kg			
		3a	34 m/min	10000 kg			
		4a	41 m/min	8000 kg			
		5a	50 m/min	6000 kg			
Carrello Trolleying Distribuci3n	◀ ▶		1a	5 m/min	16000 kg	5.5 kW	Potenza elettrica necessaria Puissance électrique nécessaire Necessary electric power Anschlusswert – Potencia
			2a	40 m/min	16000 kg		
			3a	80 m/min	8000 kg		
Rotazione Slewing Orientaci3n			1a	0 → 0.2	giri/min tr/min rp/min	8.8 kW @ 1200rpm n° 4 x 2.2 kW	
			2a	0 → 0.6			
			3a	0 → 0.9			
Traslazione Travelling Traslaci3n	◀ ▶		1a	0 → 5	15 kW		
			2a	0 → 20			

Rete elettrica – Réseau – Mains supply – Netzstrom – Red – Rede electrica

400V – 50 Hz



FMgru s.r.l.

via Emilia 11–29010 Pontenure PC ITALY
tel. 0523/510446 ric.aut. fax 0523/510365
www.fmgru.com e-mail: info@fmgru.com

FEM 1.001
2000/14/CE



Documento commerciale non contrattuale
Per tutte le informazioni tecniche riferirsi
alle corrispondenti istruzioni

Unverbindliches Vertriebsdokument.
Für technische Informationen, siehe die
entsprechenden Anweisungen.

This commercial document is not legally
binding. For any technical information, please
refer to the corresponding instructions.

Documento comercial no contractual
Para cualquier informaci3n t3cnica,
ver la noticia correspondiente.