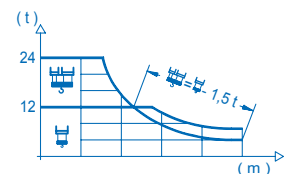
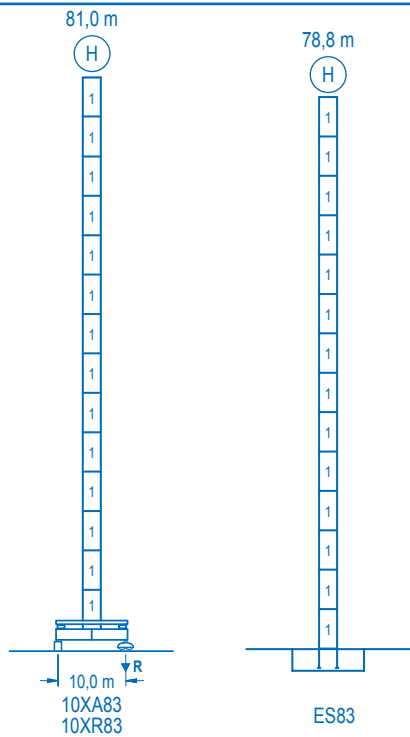


C/25 (F.E.M. 1.005)

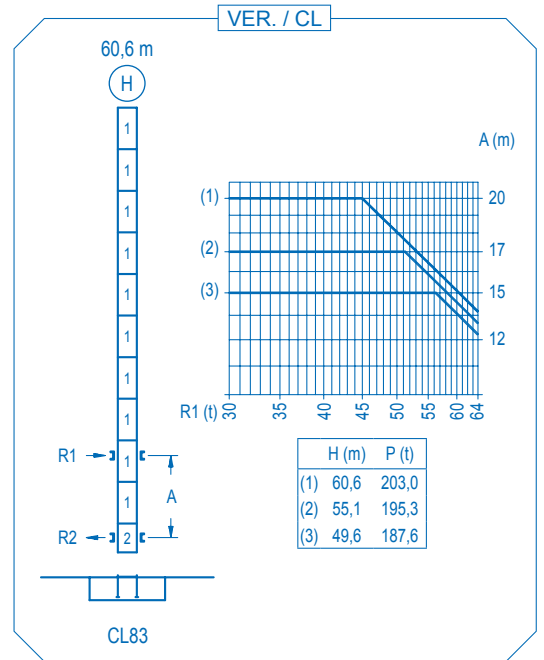
CE
DIN 15018 H1 B3

| R | ☰ | | | | | | | | | | ☱ | | | | | | | | | | | | | | | | | | | | | | | |
|----|------|------|------|------|------|------|------|------|------|------|------|------|------|------|------|------|---|-------|-------|-------|-------|-------|-------|-------|-------|-------|-------|-------|-------|-------|------|------|------|----|
| 80 | 26,4 | 28,0 | 30,0 | 32,0 | 34,0 | 36,0 | 38,0 | 40,0 | 46,0 | 50,7 | 55,0 | 60,0 | 65,0 | 70,0 | 75,0 | 80,0 | m | 24000 | 22300 | 20510 | 18960 | 17590 | 16390 | 15310 | 14350 | 12000 | 12000 | 10930 | 9870 | 8980 | 8230 | 7570 | 7000 | kg |
| 75 | 26,9 | 28,0 | 30,0 | 32,0 | 34,0 | 36,0 | 38,0 | 40,0 | 46,9 | 52,0 | 55,0 | 60,0 | 65,0 | 70,0 | 75,0 | | m | 24000 | 22860 | 21030 | 19440 | 18040 | 16810 | 15710 | 14730 | 12000 | 12000 | 11240 | 10160 | 9250 | 8470 | 7800 | kg | |
| 70 | | 28,1 | 30,0 | 32,0 | 34,0 | 36,0 | 38,0 | 40,0 | 45,0 | 49,1 | 54,7 | 60,0 | 65,0 | 70,0 | | | m | | 24000 | 22210 | 20540 | 19080 | 17790 | 16640 | 15610 | 13440 | 12000 | 12000 | 10780 | 9820 | 9000 | | kg | |
| 65 | | | 30,8 | 32,0 | 34,0 | 36,0 | 38,0 | 40,0 | 45,0 | 50,0 | 53,9 | 60,3 | 65,0 | | | | m | | | 24000 | 22900 | 21290 | 19870 | 18600 | 17470 | 15090 | 13210 | 12000 | 12000 | 11000 | | | kg | |
| 60 | | | | 33,7 | 36,0 | 38,0 | 40,0 | 45,0 | 50,0 | 55,0 | 60,0 | | | | | | m | | | | 24000 | 22200 | 20810 | 19560 | 16950 | 14870 | 13180 | 12000 | | | | | kg | |
| 55 | | | | | 36,7 | 38,0 | 40,0 | 45,0 | 50,0 | 55,0 | | | | | | | m | | | | | 24000 | 23060 | 21690 | 18830 | 16560 | 15000 | | | | | | kg | |
| 50 | | | | | 36,9 | 38,0 | 40,0 | 45,0 | 50,0 | | | | | | | | m | | | | | 24000 | 23170 | 21800 | 18930 | 17000 | | | | | | | kg | |
| 45 | | | | | 36,6 | 38,0 | 40,0 | 45,0 | | | | | | | | | m | | | | | 24000 | 22980 | 21620 | 19200 | | | | | | | | kg | |
| 40 | | | | | 36,4 | 38,0 | 40,0 | | | | | | | | | | m | | | | | 24000 | 22790 | 22000 | | | | | | | | | kg | |





| n° | Ref. | h (m) | h (m) |
|----|-------|-------|-------|
| 1 | D36 | 2,5 | 5,5 |
| 2 | CLD36 | 2,5 | 3,8 |



R. máx. En servicio
In operation
En service
In Betrieb

10XA83..... 174,5 t

R. máx. Fuera de servicio
Out of service
Hors service
Ausser Betrieb

10XA83..... 183,6 t

CFU-13

13 kW

0 ⇄ 75 m/min

GR-14

4 x 140 Nm

0 ⇄ 0,6 rpm

TRA-10

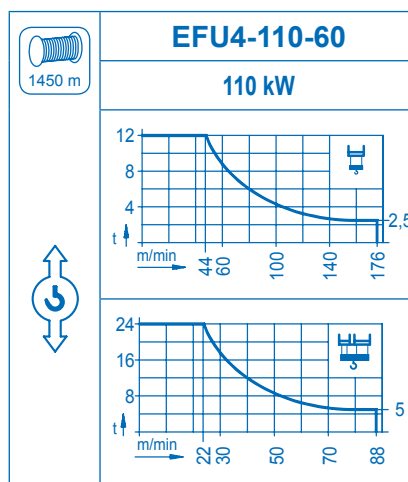
2 x 100 Nm

0 ⇄ 20 m/min

TRA-10VC

2 x 100 Nm

0 ⇄ 20 m/min



Tensión de alimentación
Operating voltage
Tension de service
Betriebsspannung

400 V
3 ph
50 Hz

Opcional
Optional
En option
Kaufoption
