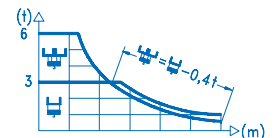
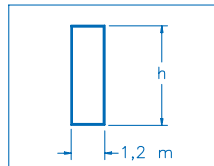
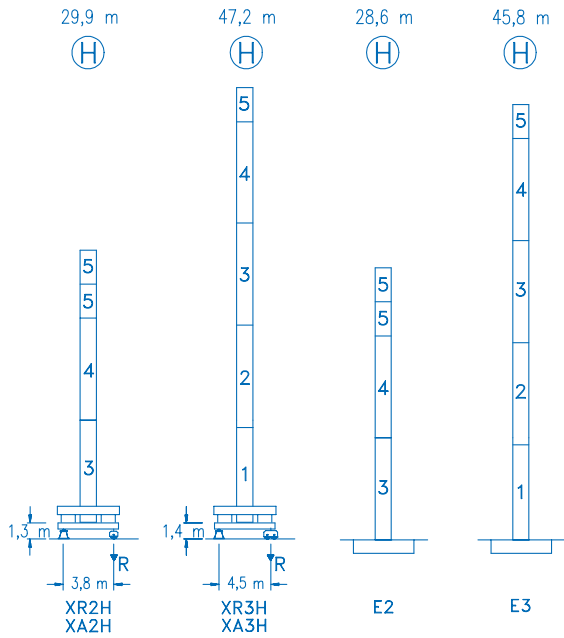


**CE**  
DIN 15018 H1 B3

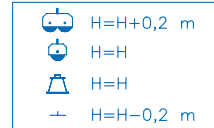
R	⚙️																⚙️																			
52,5	12,8	14	16	18	20	22,4	24,9	28	30	32	35	37,5	40	42,5	45	47,5	50	52,5 m	6000	5390	4580	3960	3460	3000	3000	2610	2410	2230	2000	1840	1700	1580	1470	1370	1280	1200 kg
50,0	13,7	14	16	18	20	23,9	26,6	28	30	32	35	37,5	40	42,5	45	47,5	50 m	6000	5820	4960	4290	3760	3000	3000	2830	2610	2420	2180	2000	1850	1720	1600	1490	1400 kg		
47,5	13,7	14	16	18	20	23,9	26,7	28	30	32	35	37,5	40	42,5	45	47,5 m	6000	5830	4960	4300	3770	3000	3000	2840	2620	2430	2180	2010	1860	1720	1610	1500 kg				
45,0	14,3	16	18	20	22	25	27,9	30	32	35	37,5	40	42,5	45 m	6000	5230	4530	3980	3530	3000	3000	2760	2560	2300	2120	1960	1820	1700 kg								
42,5	14,7	16	18	20	22	25,8	28,9	30	32	35	37,5	40	42,5 m	6000	5420	4700	4130	3670	3000	3000	2870	2660	2400	2210	2040	1900 kg										
40,0	15,0	16	18	20	22	25	26,3	29,5	32	35	37,5	40 m	6000	5550	4820	4240	3760	3200	3000	3000	2730	2460	2270	2100 kg												
37,5	14,9	16	18	20	22	25	26,1	29,3	32	35	37,5 m	6000	5500	4770	4200	3730	3170	3000	3000	2710	2440	2250 kg														
35,0	15,2	16	18	20	22	25	26,6	29,9	32	35 m	6000	5620	4880	4290	3810	3240	3000	3000	2780	2500 kg																
30,0	14,7	16	18	20	22	25,8	29,1	30 m	6000	5430	4710	4140	3670	3000	3000	2900 kg																				





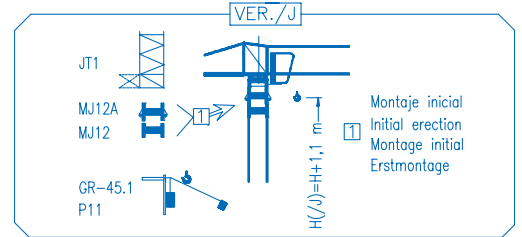
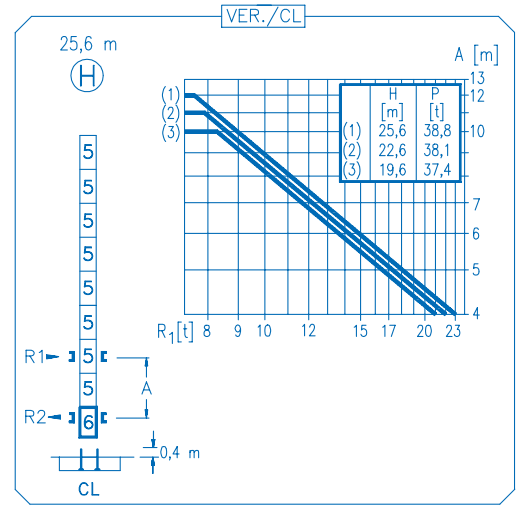
N	Ref.	h
1	MT123	10,1 m
2	MT123A	10,1 m
3	MH124A	11,8 m
4	MH124-1	11,8 m
5	MH121	3,0 m
6	CL20	2,2 m

MH124-1=(4)MH121-0,2 m



<b>R. máx.</b>	En servicio In operation En service In Betrieb	<b>XR2H ..... 41,0 t</b>
		<b>XR3H ..... 53,0 t</b>

<b>R. máx.</b>	Fuera de servicio Out of service Hors service Ausser Betrieb	<b>XR2H ..... 40,0 t</b>
		<b>XR3H ..... 79,0 t</b>



**CFU-4.0**

**4 kW**

0 ⇄ 90 m/min

**GR-4.5**

**2x45 Nm**

0 ⇄ 0,7 rpm

**TS2-4.5**

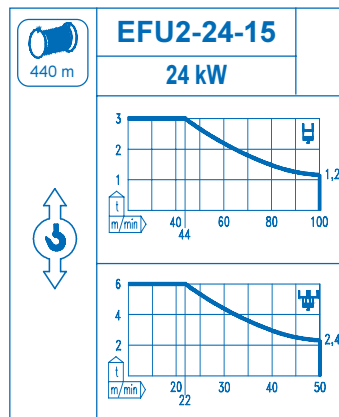
**2x45 Nm**

**TS2-5.5**

**2x55 Nm**

0 ⇄ 20 m/min

XR2H
XR3H



Tensión de alimentación Operating voltage Tension de service Betriebsspannung	<b>400 V</b> <b>3 ph</b> <b>50 Hz</b>
--	---

Opcional Optional En option Kaufoption	<b>*</b>
---	----------